



# Annual Report 2013



Department of Animal Production and Health

# **ANNUAL REPORT 2013**

**Department of Animal Production and Health**

**Peradeniya**

**Sri Lanka**

**Tel : 94 - 081 - 2388337 / 2388462**

**Fax : 94 - 081 - 2388619**

**Web Site: [www.daph.gov.lk](http://www.daph.gov.lk)**

# ANNUAL REPORT – 2013

## CONTENT

	Page No.
<b>PREFACE</b> -----	<b>IV</b>
<b>VISION, MISSION</b> -----	<b>V</b>
<b>1. Introduction</b> -----	<b>1</b>
<b>2. Livestock Sector Review</b> -----	<b>4</b>
2.1. Dairy Sector -----	4
2.2. Poultry Sector -----	5
2.3. Swine Sector -----	6
2.4. Goat Sector -----	7
<b>3. Animal Health Division</b> -----	<b>8</b>
3.1. Introduction -----	8
3.2. Animal Disease Situation -----	9
3.3. Contagious Diseases Control -----	13
3.4. Special Animal Health Programs -----	14
3.5. Veterinary Investigation Services -----	16
3.6. Financial Progress -----	17
<b>4. Animal Breeding Division</b> -----	<b>18</b>
4.1. Introduction -----	18
4.2. Special Livestock Development Projects -----	18
4.3. Financial Progress -----	21
<b>5. Veterinary Research Institute</b> -----	<b>22</b>
5.1. Introduction -----	22
5.2. Products and Services -----	22
5.3. Clients Registered at VRI -----	24
5.4. Research Projects -----	24
5.5. Research Publications -----	29
5.6. Financial Progress -----	30
<b>6. Human Resource Development Division</b> -----	<b>31</b>
6.1. Introduction -----	31
6.2. Training and Transfer of Technology -----	31
6.3. Educational and Career Development -----	32
6.4. Examinations -----	33
6.5. Information and Publicity -----	33
6.6. Entrepreneurship Development and Self- Employment Support Services -----	34
6.7. The Department Library -----	34
6.8. The Department Hot Line -----	34
6.9. Technology Park -----	34
6.10. Financial Progress -----	35

<b>7.</b>	<b>Livestock Planning and Economics Division -----</b>	<b>36</b>
7.1	Introduction -----	36
7.2	Identification and Designing of Livestock Development Programs and Projects -----	36
7.3.	Monitoring, Evaluation and Economic Analysis of Livestock Development Programs and Projects -----	37
7.4.	Review of Livestock Industries and Management of Livestock Database at National Level -----	37
7.5.	Coordination of Development Programs with Provincial DAPH and Special Development Projects -----	39
7.6.	Publications -----	39
7.7.	Other Activities-----	40
7.8.	Financial Progress -----	40
<b>8.</b>	<b>Veterinary Regulatory Affairs Division -----</b>	<b>41</b>
8.1.	Introduction -----	41
8.2.	Animal Quarantine and Inspection Service -----	41
8.3.	Regulatory Activities - Livestock Industry -----	42
8.4.	Veterinary Drug Control Authority -----	43
8.5.	Implementation of Animal Feed Act -----	44
8.6.	Animal Identification and Traceability Programme -----	46
8.7.	Financial Progress -----	47
<b>9.</b>	<b>Administration Division -----</b>	<b>48</b>
9.1.	Introduction -----	48
9.2.	Present Cadre Positions of the Department -----	48
9.3.	Approval from the Management Service-----	48
9.4.	Appointments -----	48
9.5.	Promotions -----	49
9.6.	Transfers -----	49
9.7.	Retirements -----	49
9.8.	Resignations -----	49
9.9.	Vacation of Post -----	49
9.10.	Releases from the DAPH on permanent basis -----	49
9.11.	Loans Approved -----	49
9.12.	Insurance Payments -----	49
9.13.	Financial Progress -----	50
<b>10.</b>	<b>Finance Division -----</b>	<b>51</b>
10.1.	Introduction -----	51
10.2.	Allocations -----	51
10.3.	Public Servants' Advance Account "B" -----	51
10.4.	General Deposit Account -----	51
10.5.	Departmental Income -----	52
<b>11.</b>	<b>Foreign Funded Projects -----</b>	<b>53</b>
11.1.	Project on Small Scale Dairy Farming Improvement through Genetic and Feeding Management Improvement (GFMI) in Sri Lanka -----	53

## PREFACE

Livestock development has been in an increasing trend in recent past in Sri Lanka. Empowerment of livestock stakeholders on technical aspects is one of the main reasons for this development.

As the main technical arm of the Ministry of Livestock and Rural Community Development, the Department of Animal Production and Health (DAPH) is responsible for leading technical development and regulation of statutory functions related to livestock sector. Accordingly, upgrading and maintaining a healthy animal population in the country, providing technical support, inputs and quality assurance of animal products, animal feed and veterinary pharmaceuticals are the main functions implemented by different divisions of DAPH with collaboration of provincial DAPHs and other main stakeholders. As such department facilitates production and productivity improvements in the sector and thereby to achieve sector goals identified in the Livestock Master Plan formulated by the Ministry of Livestock and Rural Community Development particularly in the dairy sector while supporting poultry, goat and swine sub sectors.

Technical innovations are much needed to achieve expected growth standards in the dairy sector. In contrast, the poultry sector in Sri Lanka has shown a phenomenal growth over the past decades and, is nearly self-sufficient in chicken meat and eggs at current purchasing power levels. However, chicken meat and eggs are yet to be available at competitive prices for further expansion of this industry and to compete in the global market. The growth in Swine and Goat sectors are more or less static and needs more attention.

This 2013 Annual Report of DAPH highlights status of livestock sub-sectors and progress of all programs/projects implemented and activities carried out by the department during the year 2013. Most of livestock sector support services/programs are jointly implemented by the National DAPH and Provincial Departments of Animal Production and Health (PDAPH). Therefore province-wise performance and the progress have been presented in this report wherever necessary.

I am thankful to all Directors and their staff in the department for extending their fullest cooperation for successful accomplishment of programs planned for the year 2013. Special word of appreciation goes to staff of the Livestock Planning and Economics Division for taking efforts in compiling and publishing this document within the stipulated time.

**Dr. W.K. de Silva**  
Director General  
31 March 2014

# DEPARTMENT OF ANIMAL PRODUCTION AND HEALTH

## VISION

Be the premier organization leading the livestock sector towards socio - economic development of Sri Lanka

## Mission

Provide technical guidance and support to achieve sustainable development in the livestock sector by maintaining a healthy animal population and enhanced productivity ensuring food safety and contributing to food security.

## 1. INTRODUCTION

The Department of Animal Production and Health (DAPH) was established under the Ministry of Rural Industrial Development in September 1978. At present DAPH functions under the Ministry of Livestock and Rural Community Development.

Most of DAPH's field level functions have been devolved to nine Provincial Departments of Animal Production and Health (PDAPH) headed by Provincial Directors.

The DAPH provides technical leadership, expertise and back-up services to Provincial Departments of Animal Production and Health (PDAPH). The department also implements a range of statutes pertaining to the livestock sector under the provisions of Animals Act, Animal Diseases Act and Animal Feeds Act. A total of 310 Divisional Veterinary Offices scattered throughout the country handle delivery services, managed by veterinarians which are functioned under PDAPH and are the main functional units of the DAPH. In line with the policy decision taken by the government to expand veterinary network to strengthen service delivery system at grassroot level, divisional veterinary offices are being established at every Divisional Secretariat level at present. Similarly a policy initiative was taken in 2006 to expand veterinary investigation network by establishing a Veterinary Investigation Centre (VIC) at each District level. 20 VIC's have been established at District level by end of 2013.

### Objectives of the DAPH

1. To assure an efficient preventive and curative animal health service.
2. To promote optimal utilization of animal genetic resources.
3. To enhance utilization of quality animal feeds and feed resources.
4. To promote growth and development of the animal feed industry.
5. To conduct research and development towards a sustainable livestock industry.
6. To develop technically competent human resources.
7. To ensure efficient and effective information dissemination and technology transfer.
8. To formulate, monitor and evaluate livestock development projects and programs.
9. To assure safety of products of animal origin.
10. To promote and facilitate good animal husbandry practices.
11. To ensure welfare and wellbeing of animals.
12. To ensure efficient management of departmental activities.

The DAPH has eight (08) functional divisions; six (06) technical divisions and two (02) support service divisions. Sub-units of DAPH are mostly located peripherally, functioned under different divisions of the DAPH.

## **Animal Health Division**

*Main Responsibility:* Surveillance, prevention and control of scheduled and emerging animal diseases of economic importance by implementing suitable control strategies and eradication programs.

### *Sub Units:*

Veterinary Investigation Centres (VIC's) located at:

Ampara, Anuradhapura, Badulla, Chilaw, Dambulla, Galle, Jaffna, Hambantota, Homagama, Kalutara, Kegalle, Kundasale, Matara, Nuwara-Eliya, Pannala, Polonnaruwa, Ratnapura, Trincomalee, Vavuniya and Welisara.

## **Animal Breeding Division**

*Main Responsibility:* Development of livestock genetic and feed resources.

### *Sub Units:*

Central Artificial Insemination Station - Kundasale  
Artificial Insemination Centre - Polonnaruwa  
Goat Breeding Stations -Imbulandanda and Thelahera

## **Human Resource Development Division**

*Main Responsibility:* Development of human resources, skills development and dissemination of information required for further growth of the livestock sector.

### *Sub Units:*

Institute of Continuing Education for Animal Production and Health - Gannoruwa

Sri Lanka School of Animal Husbandry - Kundasale

Animal Husbandry Training Centre - Seppukulama

Livestock Knowledge Centre, Getambe  
Livestock Technology Park, Gannoruwa

## **Veterinary Research Institute**

*Main Responsibility:* Plan and execute research programs and to provide technical products and specialized services to fulfill the needs of livestock industry.

### *Sub units:*

Central Poultry Research Station - Karandagolla  
Animal Virus Laboratory - Polgolla

## **Livestock Planning and Economics Division**

*Main Responsibility:* Formulation of livestock development programs/projects and monitoring and evaluation of livestock development programs/projects implemented by national/provincial DAPH and appropriate agencies.

## **Veterinary Regulatory Affairs Division**

*Main Responsibility:* Implementation of statutes pertaining to the livestock sector.

### *Sub units:*

Animal Quarantine Stations (Colombo, Katunayake and Hambantota)



**Administration Division**

*Main Responsibility:* Proper management of resources and ensuring smooth functioning of the Department.

**Finance Division**

*Main Responsibility:* Efficient management of finances allocated to the Department.

**Members of the Directorate**

Members of the Directorate in 2012 were as follows:

Dr. W. K. de Silva, Director General, Dr. B. Sivayoganathan, Additional Director General - Livestock Development, Dr. D.R.T.G. Rathnayake, Additional Director General - Animal Health and Research (covering - up) and

Director - Animal Breeding, Dr. A. Sivasothy, Director - Animal Health, Mr. R.M.L. Rathnayake, Director - Human Resource Development (covering up), Dr. T.A.C. Tisskumara, Director - Veterinary Regulatory Affairs, Mrs. C.H. Kurukulaarachchi, Director - Administration, Mr. W. Galahitiyawa, Director - Finance, Dr. K.D. Ariyapala, Head - Livestock Planning and Economics and Dr. S.S.P. Silva, Head - Veterinary Research.

The Organization structure of the DAPH is shown in *Annex I*.

## 2. LIVESTOCK SECTOR REVIEW

The total contribution of the livestock sector to the National GDP in 2013 was around one (01) percent.

### 2.1. Dairy Sector

The Dairy Sector has been identified as the priority sector for development among other livestock sub sectors in the country. Cattle and Buffalo population in the country in 2013 has been recorded as 1.27 million and 0.47 million respectively. (Source: DAPH) Domestic milk production recorded as 381.36 million liters. (Source: DAPH) It is an increase of 6.3% compared to the previous year.

Number of milk chilling centers in the year totaled up to 230. Milk collection in the country has shown a significant progress in the year 2013. The amount of milk collected by 15 main milk processors in the formal milk market in the year amounted to 202.1 million liters which is an increase of 10.1% over the 2012 volume of 183.60 million liters. Around 30.6% and 20.5% of milk collected in the country from the Central Province and the North-Western Province respectively. Milk collection

has been increased in 2013 in all provinces compared to the year 2012.

Average farm-gate price per liter of milk in 2013 was around Rs.51.40. Average cost of production of one liter of milk in up country and mid country in 2013 was recorded as Rs.30.77 under intensive management systems. (Source: LPE Division, DAPH)

Form of powdered milk out of milk and milk products imported was 84.7% which had 1.5 % of fat.

Import of dairy products amounted to 69,452.36MT in 2013, a decrease of 17.13% over the corresponding figure of 83,817.74 MT in 2012 (Source: Department of Customs). Out of total dairy products imported into the country in 2013, full cream milk powder amounted to 58,792.46 MT which was a decrease of 16.64% when compared with 70,531.21 MT in the year 2012. Similarly, import of non-fat milk powder at 7,186.45MT in 2013 showed a decrease of 18.9% from the 2012 import volume of 8,861.85 MT. Total import bill on dairy products reached Rs.37 billion in 2013.

The average price including Cost, Insurance and Freight (CIF) prices (LKR) of imported dairy products in 2012 and 2013 were as follows:

	2012 (Rs./MT)	2013 (Rs./MT)
Whole milk powder	428,114.38	546,633.00
Skim milk powder	472,125.0	512,745.58

Source: Department of Customs

International market prices of whole milk powder showed an increase

towards end of the year. Comparison of prices in 2012 and 2013 is as follows:

**International market prices of dairy products (2012 - 2013)**

Product	Price USD/MT			
	2012 (Avg.)		2013(Avg.)	
	Jan	Dec	Jan	Dec
Whole milk powder	3,600.00	3,913.00	3,975.00	5,106.00
Skim milk powder	2,950.00	3,500.00	3,541.00	4,438.00

Total availability of milk and milk products in the country had been 888.39 million liters of Liquid Milk Equivalent - LME (domestic production and imports) and the per-capita availability was recorded as 120.44 ml/day in year 2013.

## 2.2. Poultry Sector

### 2.2.1. Broiler Industry

Procurement of broiler grandparents and parents recorded as 25,790 and 1,185,352 respectively during the year. Out of which 861,430 were locally purchased parents. Procurement of broiler grandparents increased from 17,740 in 2012 to 25,790 in 2013. A total of 110.71 million broiler chicks were produced during the year, and increase of 0.8% from the corresponding number of 109.83 million in 2012.

Only 32 broiler breeder farms were in operation during the year and main broiler breeder strains chosen by them were Cobb (37%), Hubbard (35%) and Indian River (28%). Broiler parents were imported from France (29%), UK (12%) and the USA (5%). The rest was purchased from local Grand Parent (GP) farms which is three (03) in number.

Average price of a day-old broiler chick had been Rs.67.70 in 2013 ranging from Rs.60.00 in January to Rs.80.00 in June. Average farm-gate price of live broiler recorded as Rs.217.67/Kg with the lowest price of Rs.165.00/Kg (November) to the maximum price of Rs.250.00/kg (February).

### 2.2.2 Layer Industry

Imports of layer parents recorded as 88,553 in the year 2013. Pullet chick production was recorded 7.38 Million which was 7.79 Million in year 2012. Average pullet chick price was recorded as Rs.104.62 during the year 2013. Thirteen (13) layer breeder farms were in operation during the year and Bovans White (25%), Hyline (21%), Shaver 579 (17%), Bovans Brown, (14 %), Shaver 288 (8%), ISA de Kalb (7%), Novogen (7%), were the main layer breeder strains imported by these farms. Majority of these imports were from France (73%) and UK (27%).

Farm gate price of table eggs (brown) changed from Rs.10.70 (July) to Rs.14.78 (June). Average farm-gate price for the whole year recorded as Rs.12.35 a increase of 35.7% from the previous year. Average Retail price of brown and white eggs recorded as Rs.14.98 and Rs.14.32 respectively. Total egg production of the country recorded as 2,074.94 million eggs which included 5% of village chicken eggs.

### 2.2.3. Poultry Feed Industry

Twenty two (22) large, medium and small-scale registered poultry feed manufacturers were in operation during the year and the total feed production in the country estimated as 872,459.78 MT

which is 27.4 % increase compared to previous year (684,920 MT). (Source: DAPH)

#### 2.2.4. Poultry Processing Sector

Three (03) large scale and 11 medium scale poultry processing establishments and seven (05) further processing establishments were in operation during the year 2013. Estimated chicken meat production in 2013 at 144,540 MT recorded an increase of 5.2 % over the 2012 volume of 137,390 MT. Total value added meat products manufactured by further processing establishments amounted to 10,038 MT in the year, an increase of 1% over the 2012 volume of 9,945 MT. Out of this production in 2013, a major portion (88.5%) consist of chicken meat based value added products.

#### 2.2.5. Exports

Export of chicken meat and chicken meat products recorded as 1,524.46 MT in the year; and increase of 1,065.23 MT from the previous year's volume of 459.23 MT. Bulk of these chicken meat and chicken meat products were exported to Maldives, India, Hong Kong and Vietnam. Export of table eggs at 3.44 million recorded a further increase by 60% from the corresponding figure of 2.15 million in 2012. A total of 51,656 day-old commercial chicks were exported during year 2013. Instead of importing total of 5,763,043 hatching eggs were exported during the years 2013.

#### 2.2.6. Imports

Import of chicken meat and meat products recorded 352.46 MT, a remarkable decrease of 58.3% from the corresponding year 2012 figure of 844.51MT. However, these quantities represented just 0.2 % of the estimated domestic chicken meat production for

the year. Eggs in the form of liquid and powder form imported to the country 11.9MT and 110.53MT respectively during the year 2013.

(Key data pertaining to the Industry in 2013 are given in Annex II)

### 2.3. Swine Sector

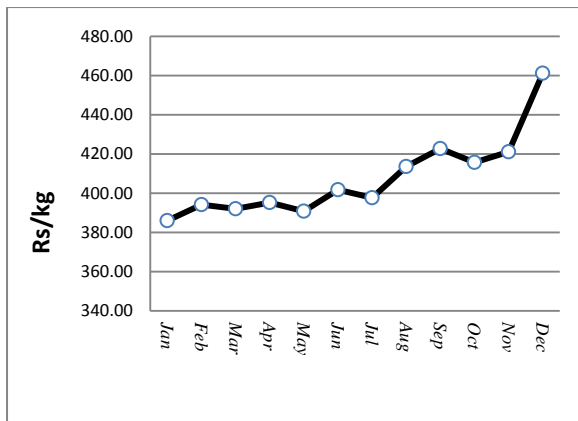
Swine sector is one of the main livestock sub- sectors which placed next to the poultry and dairy sectors in Sri Lanka. More than 11,927 farmers are engaged in swine farming as their main income generating activity.

Pig farming is mainly concentrated into four (04) districts in Sri Lanka. These districts include Colombo, Gampaha, Kalutara and Puttlam. Apart from these traditionally identified areas, pig farming is also seen in other parts of the country as well in the Central part and the North Central part.

Total pig population in Sri Lanka has been recorded as 89,334 in 2013 (Source: DAPH-2013). Swine farms could be categorized as small-scale (60%) medium-scale (25%) and large-scale (15%).

Estimated pork production in the country had been 7,040 MT during the year 2013. A total of 157 Kg of pork have been imported into the country in 2013 and 5051 Kg of pork and pork products have been exported.

Monthly average retail price of pork during the year ranged from Rs.386.00 per Kg in January to Rs.461.20 per Kg in December (Source: HARTI).



Source: HARTI

**Figure 2.1: Monthly Average Retail Price of Pork- 2013**

Upgrading of swine population through artificial breeding is carried out by the DAPH using chilled semen produced at Kotadeniyawa Animal Husbandry Training Center. This program is successfully being implemented by the Provincial Department of Animal Production and Health (PDAPH), Western Province with the technical support of the DAPH.

Vaccination against Japanese Encephalitis (JE) and FMD was done in relevant provinces to keep swine population healthy and to prevent transmission of zoonotic diseases (i.e. JE) to humans.

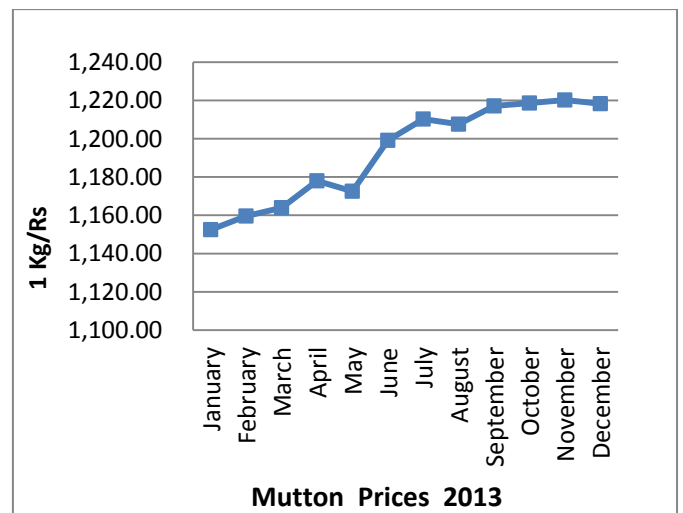
**2.4. Goat sector**

Goat farming is concentrated mainly in dry and intermediate zones of the country where about 75% of goat population is distributed. Goat population in 2013 recorded as 408,787 (Source: DAPH-2013) and number of goat farms in the country recorded as 32,944. (Source: DAPH)

Two goat breeding farms located at Thelahera and Imbulandanda, operated under the DAPH, contributed in upgrading of goats by distributing breedable animals.

Artificial inseminations (AI) are being done using deep frozen semen produced at Central Artificial Insemination Centre, Kundasale and imported deep frozen semen as well. Artificial insemination service has been provided almost all provinces.

Average retail price of mutton in the country reported as Rs. 1,193.13/Kg in the year 2013 ranging from Rs.1,152.50/Kg in January to 1,220.20/Kg in November (Source: HARTI). A total of 385.48MT of mutton had been imported into the country during the year 2013(Source: Department of Customs). Change of average retail prices of mutton shown below. (Figure2.2)



Source: HARTI

**Figure 2.2: Retail Price Changes of Mutton 2013**

### 3. ANIMAL HEALTH DIVISION

#### 3.1.Introduction

The Division of Animal Health is one of the six (06) technical divisions in the Department of Animal Production and Health (DAPH) which is the main implementing organization in Sri Lanka responsible for ensuring required animal health status for development of the livestock industry in the country. Animal Health division has the national unit located at Head Quarters of Department of Animal Production and Health with its component namely Vaccine Bank at Getambe. Its peripheral units namely Veterinary Investigation Centres are existing at district level.

#### Functions of the Division

The mission of Animal Health Division has been identified as provision of technical leadership and back-up services to prevent entry of exotic diseases and to control and eradicate existing economically important and zoonotic diseases while maintaining animal welfare and ensuring food safety of animal origin.

In order to accomplish the said mission the following major tasks were earmarked to be carried out during the year 2013.

- Strengthening GIS based disease surveillance and animal disease database.
- Design, support, monitor and evaluate mass-scale preventive vaccination programme.
- Maintenance of Vaccine Bank and Veterinary-Store.
- Provision of laboratory back-up service for disease diagnosis.
- Establishment and maintenance of district based Veterinary Investigation network.
- Formulation and implementation of Special Programs against identified exotic, emerging and re-emerging animal diseases.
- Compilation and dissemination of animal health related information locally and internationally.
- Functioning as the focal point to World Animal Health Organization.
- Initiation of Veterinary Public Health programs with special emphasis on zoonotic disease control and safety of food of animal origin.

## Main Activities of the Division

The major activities performed during the year under review could be listed as follows:

- Monitoring and evaluation of animal diseases status in the country and dissemination of animal health related information locally and internationally.
- Maintenance of Vaccine Bank, island wide distribution of vaccines and monitoring of livestock vaccination programme.
- Strengthening of Veterinary Investigation network for improved disease surveillance and laboratory back-up for disease diagnosis.
- Implementation of special programmes for livestock health improvement.
- Planning and implementation of avian influenza surveillance programme and emergency preparedness against emerging, re-emerging and exotic diseases.
- Formulation and implementation of Veterinary Public Health policy in order to effectively control identified zoonotic diseases under 'One health' concept.

## 3.2. Animal Disease Situation

### 3.2.1. Bovine Diseases

#### a. *Haemorrhagic Septicaemia*

The country remained as free of Haemorrhagic Septicaemia, a major killer disease of cattle and buffaloes in the past decades. Furthermore disease surveillance was strengthened at a very much higher level since the declaration of 'provisional freedom from Haemorrhagic Septicaemia' in year 2012. Eventhough, the preventive large-scale vaccination against this disease was brought to a standstill and therefore not a single HS vaccination was carried out during this year, 89,300 doses of Alum precipitated HS vaccine was prepared and made available for any emergency situation.

#### b. *Foot and Mouth Disease*

Foot and Mouth Disease outbreak was noticed in the month of June at Uhana Veterinary range in Ampara district. The total number of recorded cases in this outbreak was only seven (07). However, in late December 2013, outbreaks of FMD were detected in three (03) Veterinary ranges namely Thellipalai, Kopay and Vaddukoddai of Jaffna district in the Northern Province. The disease broke out extensively and spread very fast among the highly susceptible

unvaccinated population. Index case was found at Palaly Army Camp in high security area and the source of infection is under study and hypothesized as either frequent transfer of animals by Armed Forces from endemic areas such as Mullaithivu or arrival of diseased

goats from South India through Multiday Fishing Vessels encroached into Sri Lankan water and confiscated by Sri Lankan Navy with live animals. Laboratory investigation revealed the presence of Foot and mouth virus belonging to the serotype 'O'.

**Table 3.1: Spatial and Temporal Distribution of FMD in 2013**

	District	Veterinary Range	No. of		Month(s) of Occurrence
			cases	Deaths	
1.	Ampara	Uhana	7	0	June
2.	Jaffna	Thellipalai	66	0	December
3.	Jaffna	Vaddukoddai	23	0	December
4.	Jaffna	Kopay	258	2	December
<b>All Island Total</b>			<b>354</b>	<b>2</b>	

*c. Black Quarter*

Sporadic cases of Black Quarter were notified in seven (07) districts in the country. However, the total number of cases was only 25; the case-fatality was 100%.

**Table 3.2: Spatial and Temporal Distribution of BQ in 2013**

	District	Veterinary Range	No. of		Month(s) of Occurrence
			cases	Deaths	
1.	Ampara	Uhana	2	2	May
2.	Puttlam	Arachchikattuwa	1	1	July
3.	Vavuniya	Vavuniya	15	15	July
4.	Trincomalee	Kanthale	1	1	August
5.	Kurunegala	Ambanpola	2	2	August
		Rasnayakapura	2	2	October
6.	Mannar	Mannar	1	1	September
7.	Matale	Wilgamuwa	1	1	October
<b>All Island Total</b>			<b>25</b>	<b>25</b>	



**d. Brucellosis**

Bovine brucellosis is an economically important disease of cattle and buffaloes and it adversely affects their reproduction. It is also zoonotic in nature and thereby causes disease in human. In Sri Lanka the disease is endemic in certain parts of Eastern and North Central Provinces and vaccination is practiced using the S-19 brucella vaccine which is produced locally in the country. During the year 2013 in total of 5,932 animals have been vaccinated in the country through the Veterinary Investigation Centres.

**e. Bovine Tuberculosis**

Bovine tuberculosis has been reported and confirmed in cattle population since year 2012 and also

new cases have been reported in year 2013. The causative organism is the *Mycobacterium bovis* in cattle and also it can affect other domestic animals as well as wild animals. Tuberculosis in human is not an uncommon feature in Sri Lanka and about 9000 new human cases of tuberculosis are notified every year in the country.

Control program on Bovine Tuberculosis has been implemented at national level and a base line data establishment was initiated during the year 2013. Cattle reared at farms belong to National Livestock Development Board (NLDB) have been screened with the Comparative Tuberculin Purified Protein Derivative (PPD) test to detect the positive animals. The screening programme revealed the following results;

**Table 3.3.: Details of Tuberculosis Screening Programme in 2013**

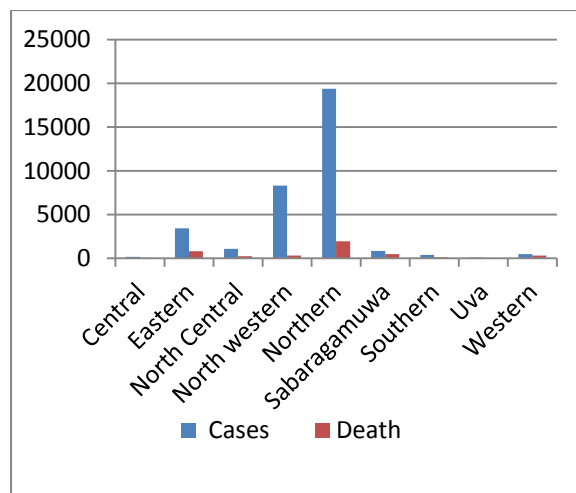
Veterinary Investigation Centre	NLDB Farms	Private Farms tested	No. of animals screened with PPD	No. of Test positives	No. inconclusive
Nuwara Eliya	Dayagama	-	573	nil	00
	Bopaththalawa	-	320	nil	00
	Manikpalama	-	2,000	nil	
Wariyapola	-	08	138	nil	00
Badulla	-	04	09	Uva Paranagama 01 Welimada 01	01

All the positive animals detected at NLDB farms have been segregated and moved to the Yakwila farm, as a part of the BTB management program. Furthermore testing for tuberculosis has been suggested to be a required condition for transporting cattle from areas to areas for farming purpose.

**3.2.2. Poultry Diseases**

**a. Newcastle Disease**

Outbreaks of Newcastle disease were observed in all the Provinces during the year under review. Major outbreaks were encountered in Northern Province in spite of using the locally produced vaccine in large scale. A total of 34,150 cases were recorded and 4,317 birds succumbed to death, whereas in the previous year there had been 141,756 cases with 23,538 deaths recorded in the country.



**Figure 3.1: Distribution of Newcastle Disease - 2013**

**b. Infectious Bursal Disease**

Infectious Bursal Disease (Gumboro disease) remained as the primary poultry disease recording the highest number of cases in the country. In overall 415,132 cases were recorded of which more than 75% were confined to North Western Province.

**Table 3.4: Distribution of Infectious Bursal Disease - 2013**

Province	Cases	Deaths
Central	698	121
Eastern	7,003	1,025
North Central	10,186	872
North western	343,919	17,717
Northern	5,204	705
Sabaragamuwa	3,216	529
Southern	3,801	246
Uva	3,740	290
Western	37,365	5,175
<b>Total</b>	<b>415,132</b>	<b>26,680</b>

**c. Salmonellosis**

Salmonellosis in poultry is caused by mainly *S. pullorum* and *S. gallinarum*. In overall 41,268 cases were reported in the country during the year 2013 and 104 deaths were reported in commercial poultry farms.

**Table 3.5.: Distribution of Poultry Salmonellosis in Commercial Poultry Farms**

Province	Case	Deaths
Central	882	10
Eastern	147	7
North Central	138	3
North western	35,908	25
Northern	2,087	17
Sabaragamuwa	278	14
Southern	3	1
Uva	199	7
Western	1,626	20
<b>Total</b>	<b>41,268</b>	<b>104</b>

Mouth Disease and Black Quarter in cattle and buffaloes.

**Table 3.6: Issue of Vaccines to the Field in 2013**

Province	Type of Vaccine in doses	
	FMD	BQ
North Western	70,000	61,347
Eastern	139,500	50,094
North Central	141,020	35,838
Northern	78,050	62,337
Southern	20,050	2,013
Uva	0	5,973
Western	33,100	0
Central	0	1,023
Sabaragamuwa	0	0
<b>Total</b>	<b>481,720</b>	<b>218,625</b>

### 3.3. Contagious Diseases Control

#### 3.3.1. Vaccination of Livestock

Mass-scale preventive vaccination was carried out against Foot and

**Table 3.7: Province-wise Vaccination Targets and Achievements in 2013**

Province	FMD		BQ	
	Target	Progress	Target	Progress
North Western	120,000	58,230	70,000	50,525
Eastern	120,000	95,663	45,000	41,555
North Central	150,000	105,078	45,000	33,882
Northern	100,000	27,750	70,000	45,231
Southern	20,000	13,390	5,000	1,863
Uva	60,000	0	10,000	5,443
Western	80,000	24,718	0	0
Central	30,000	360	5,000	475
Sabaragamuwa	20,000	51	0	170
<b>Total</b>	<b>700,000</b>	<b>325,240</b>	<b>250,000</b>	<b>179,144</b>

### 3.3.2. Vaccination of Poultry

Vaccine against Newcastle disease has been produced locally and distributed through the Government Veterinary Surgeons for free distribution in order to immunize especially the backyard poultry and small-scale poultry farms. Accordingly 4.94 million doses of vaccine in 200 dose pack-size has been distributed to the Field Veterinary Surgeons and the feed-back report indicated that 3 million birds have been vaccinated using the locally produced vaccine as shown in *Table 3.8*. Furthermore, the vaccine was also prepared in 500 dose vials and they were made available for large-scale poultry operators at a nominal rate of Rs.100/= per vial. However the requirement of this larger pack size did not have good response.

**Table 3.8. Vaccination against Newcastle Diseases using locally produced Vaccine**

Province	Vaccination
Western	293,323
Central	39,935
Southern	117,225
North Central	31,096
North Western	201,849
Northern	1,427,128
Eastern	789,269
Uva	17,139
Sabaragamuwa	88,892
<b>Island Total</b>	<b>3,005,856</b>

### 3.4. Special Animal Health Programs

#### a. Livestock Health Improvement Project

A special project had been initiated in year 2007 in selected dairy farms at districts where functional Veterinary Investigation Centres are located in order to monitor the disease status closely and to assist to improve the health and production in these farms. The field level implementation was carried out through the respective Veterinary Investigation Centres in these districts. The Project envisaged at fulfilling the long term need of establishing active focal points for disease monitoring and surveillance at district level. The selected farms were identified with geo-reference, a database was developed with all relevant information and the farms were visited by the respective VIOO on a regular basis.

Under this project 2,584 dairy farms have been visited by the Veterinary Investigation Officers during the year 2013. Subsequently, 6,608 milking cows have been subjected to California Mastitis Test (CMT) for early detection of sub clinical mastitis. Moreover, 1,711 liters of teat dip solution and 147 liters of CMT Reagents were prepared at VICC and were distributed among these famers and relevant Veterinary Surgeons in order to improve the hygienic

practices in these farms. Samples that have shown high positive reactions to CMT have been further subjected to laboratory investigation. Bacterial cultures indicated the presence of *Staphylococci*, *Streptococci*, and *E. coli* species. Accordingly treatment using suitable antibiotics was recommended.

Antibiotic sensitivity tests (ABST) identified the antibiotics namely Enrofloxacin, Neomycin, Gentamycin, Streptomycin and Oxytetracycline as drugs of choice at different instances. It was recommended to use these drugs using the locally produced udder base as the vehicle for incorporating these antibiotics for preparation of more appropriate and economically beneficial udder infusions.

**b. Avian Influenza Surveillance Programme**

The national surveillance programme against Avian Influenza as a mean of establishing early warning system which was initiated in 2007 continued in year 2013 too. Field level implementation was carried out mainly by the Veterinary Investigation Officers. The sero-surveillance Programme for the entire country was prepared, coordinated and monitored for its efficiency and effectiveness. A total of 2,942 serum samples were collected during the year under review.

In addition to the sero-surveillance programme, the risk-focused Targeted surveillance programs were also carried out during the year 2013. One thousand two hundred and eighty one (1,281) pooled cloacal swabs / fresh droppings were collected from Wild / migratory birds and Back-yard poultry in the vicinity of 'Hot spots' and subjected to virus isolation and found to be negative for Avian Influenza Virus Isolation.

**c. Salmonella Control Programme**

All the Poultry Breeder farms having either parent birds or grandparent birds have to be in salmonella-free status in order to ensure the production and supply of salmonella-free chicks from their farms. Accordingly these farms have been instructed to carry out regular screening programs to be followed by official verification by the relevant Veterinary Investigation Centres and the Veterinary Research Institute.

Thirty eight Poultry Breeder Farms with parent stock were in operation during the year 2013. However, some of these registered farms had more than one operating units/ locations in areas far apart. *Salmonella* organism was isolated at some of the hatcheries proving the origin of infection from the breeder farm and the existence of vertical transmission of infection thereafter. Breeder birds were subjected to

salmonella testing (whole blood) as a screening programme by self-testing. This is further followed by the verification by the relevant VIOO by testing the appropriate number of birds to detect even 1 % prevalence rate at 95 % confidence interval. Furthermore vaccination was allowed in Breeder Farms to control the infection and eleven Breeder farms carried out the Salmonella vaccination during the year under review.

### **3.5. Veterinary Investigation Services**

The concept of strengthening the laboratory back up for Veterinary services by providing Veterinary Investigation facilities at District level by District Veterinary Investigation Centres (VICC) was recognised in Year 2006. Since then continuous effort has been taken to ensure that these facilities are set up at each and every district. Establishment of new Veterinary Investigation Centres at Moneragala and Batticaloa districts were initiated during the year 2013 by identifying and clearing the lands for building construction. Furthermore, with the two VICC functioning at temporary buildings at Galle and Kalutara the number of total functioning VICC

became twenty during the year under review.

Veterinary Investigation Centres focused mostly on animal disease investigation in order to support the disease surveillance system in the country. There were 376 field level investigations carried out during the year 2013. Foot and Mouth Disease, Black Quarter, Brucellosis, Babesiosis, Theilariasis and Mastitis in cattle and buffaloes; Newcastle Disease, Salmonellosis, Infectious Bursal Disease and Coccidiosis in poultry are some of the specific disease conditions diagnosed or/and confirmed at District Veterinary Investigation Centres during this period.

Veterinary Investigation Centres played the leading role in immunization of cattle against bovine brucellosis, bovine babesiosis; contagious pustular dermatitis vaccination in goats; mastitis control programme in cattle; salmonella control programme in poultry breeder farms and avian influenza surveillance programme at national level. Detail information on activities performed at Veterinary Investigation Centres during the year 2013 has been shown in *Annexure III*.

### 3.6. Financial progress

The capital and recurrent financial allocation and expenditure for the year 2013 are as follows.

	<b>Allocation (Rs. Mn)</b>	<b>Expenditure (Rs. Mn)</b>	<b>Achievement (%)</b>
Capital	68.5	50.0	72.9
Recurrent	8.4	13.2*	100.0

\*Additional Allocation were provided

## 4. ANIMAL BREEDING DIVISION

### 4.1. Introduction

Animal Breeding Division of the DAPH is responsible for national level livestock improvement through appropriate breeding techniques.

Genetic materials are produced at Kundasale and Polonnaruwa Artificial Insemination Centers to breed cattle, buffalo and goats artificially. Both Centers are equipped to produce Deep Frozen (DF) semen.

Two (02) goat breeding farms located at Thelahera and Imbulandanda maintain Jamunapari nucleus herds and provide genetic materials for breeding of goats.

#### *Main Functions of the Division*

- Improving the genetic make-up through the use of Animal Reproductive Technologies.
- Enhancing the available feed resource base through the introduction of fodder resources.
- Development of skilled human resources in order to strengthen the animal breeding services.
- Conservation and sustainable utilization of Livestock Genetic Resources.

### 4.2. Special Livestock Development Projects implemented during the year 2013

*Four (04) special livestock development projects were implemented through national budget.*

- a. Livestock Breeding Project
- b. Heifer Calf Rearing (HCR) Project
- c. Goat Development Project
- d. Strengthening of field level Goat breeder farms

*One (01) development project was implemented through Foreign Funds\*(Details are given under Chapter 11)*

- a. Genetic and Feeding Management Improvement Project – Funded by JICA

#### 4.2.1. Livestock Breeding Project

##### a. Production of Semen

A total number of 247,299 doses of DF semen from Jersey, Friesian, and Saanan breeds were produced at Central Artificial Insemination Station (CAIS), Kundasale and 48,360 number of doses of deep frozen semen from Jersey, Friesian and Australian Friesian Sahiwal (AFS) breeds were produced at Artificial Insemination Center (AIC), Polonnaruwa.

Cost of Production per DF semen dose in 2013 had been escalated by 14.7% compared to the cost (Rs. 34.32) in 2012.

##### b. Import of Semen

Semen has not been imported during the year 2013. However, quantity of sexed semen (1,496 Girolando and 9,986 Jersey semen doses) received as late arrival which was ordered during the year 2012 was used in the year 2013.

##### c. Distribution of Semen

A total of 255,952 doses of locally produced and 3,541 doses of imported DF semen were distributed in the country during the year (Table 4.1). This includes semen of Cattle, Buffalo and Goat.



**Table 4.1: Breed-wise semen issues – 2013**

Species	Breed	Locally produced	Imported
Cattle	Jersey	157,535	269
	Jersey (sexed)	-	674
	Friesian	28,865	220
	Friesian (sexed)	-	730
	Sahiwal	24,720	294
	AFS	32,811	-
	Girolando	-	881
	Girolando (sexed)	-	388
Buffalo	Murah	5847	10
	Nili-Ravi	-	60
Goat	Jamunapari	5327	-
	Saanan	827	15
	Boer	20	-
<b>Total</b>		<b>255,952</b>	<b>3,541</b>

**d. Artificial Insemination Service**

*Artificial Inseminations (AI)*

Achievement of AI of cattle and buffaloes during the year 2013 was 216,660 which is an increase of 19.2%. Leading performances were recorded as 25.3% in North Western Province followed by 24.9% in Central Province.

Province-wise AI targets, performance and achievement of the country for the year 2013 are given in *Table 4.2*.

AI for goat was 3,852 while it was 289 in swine during the year 2013.

**Table 4.2: Province-wise AI targets, performance and achievement- 2013 (Cattle and Buffalo)**

Province	Target (No.)	Performance (No.)	Achievement (%)
Western	29,000	25,182	87
Central	52,000	53,927	104
Southern	15,000	11,250	75
Northern	25,000	18,197	73
Eastern	14,000	9,421	67
North western	54,000	54,557	101
North central	20,000	16,209	81
Uva	20,000	20,729	104
Sabaragamuwa	14,000	7,128	51
<b>Total</b>	<b>243,000</b>	<b>216,000</b>	<b>89</b>

*Pregnancy Diagnosis (PD)*

Number of Pregnancy Diagnosis performed by field veterinarians was 57,010. Detail of Province-wise target,

performance and achievement are given in *Table 4.3*.

**Table 4.3: Province-wise target, performance and achievement of PD- 2013**

Province	Target (No.)	Performance (No.)	Achievement (%)
Western	9750	7750	79
Central	24,000	7563	32
Southern	6140	6058	99
Northern	4990	4314	86
Eastern	7435	5189	70
North western	26,000	1484	54
North central	8000	3111	39
Uva	4922	6209	126
Sabaragamuwa	4800	2732	57
<b>Total</b>	<b>96,037</b>	<b>57,010</b>	<b>59</b>

**Calving**

province-wise target, performance and achievement are given in *Table 4.4*.

A Total number of 71,878 calvings have been reported during the year. The

**Table 4.4: Province wise target, performance and achievement of calving - 2013**

Province	Target (No.)	Performance (No.)	Achievement (%)
Western	10,900	10,689	98
Central	18,000	16,248	90
Southern	5,400	4,291	79
Northern	3,751	3,667	98
Eastern	4,659	3,144	67
North western	25,000	20,882	84
North central	4,608	3,607	78
Uva	5,212	6,591	126
Sabaragamuwa	3,200	2,759	86
<b>Total</b>	<b>80,730</b>	<b>71,878</b>	<b>89</b>

**AI Training**

Livestock Development Officers (LDO) and Private AI technicians were trained on AI in order to strengthen the field AI programme. A total member of 131 persons received training. Out of them 50 LDOs and 36 private technicians received field training, while 45 LDOs received refresher training conducted at Center, Polonnaruwa (*Table 4.5*).

**Table 4.5: Training of AI Technicians**

Technician Category	No. Trained
LDO (Fresh)	50
LDO (Refresh)	45
Private Tech (Fresh)	36
<b>Total</b>	<b>131</b>

**e. Infertility Investigations**

Total of 452 cases were attended during the year

**f. Natural Breeding**

The objective of Natural breeding Programme is to supply suitable bull calves (mainly cross bred) for needy farmers, in order to enhance the natural Breeding.

**Achievements in 2013:**

- Total number of bull calves selected - 138 (cattle 42, buffalo 96)
- Total Number of bull calves issued - 105 (cattle 30 buffalo 75)

#### g. Pasture Development Programme

The pasture development programme is implemented in the government farms as well as with the farmers who need assistance for pasture and fodder development.

The main objective is to maintain pasture and fodder nurseries with improved varieties, issue pasture planting materials to needy farmers and conducting training and extension programs for farmers as well as for officers. Details of progress are given in *Table 4.6*.

**Table 4.6: Pasture Development Programme - 2013**

Activity	Target	Achievement
Monitor progress of provincial fodder nurseries (No.)	06	06
Establishment of fodder in unutilized lands in tea estates (ha)	20	12
Conduct TOT programs (No. of participants)	25	48
Adaptive testing of fresh fodder type: extent cultivated (ha)	02	04

#### 4.2.2. Heifer Calf Rearing Program

Activities of the Heifer Calf Rearing (HCR) project initiated only in July 2013 due to a logistic problem and the

progress is based on the second half of the year. The physical achievements for the year 2013 are given in *Table 4.7*

**Table 4.7: Physical Achievements of Heifer Calf Rearing Project**

Major activity	Unit	Target	Achievement
Registration of AI born heifer calves	No. of calves	30,000	4527 (15%)
Farmer incentives	No. of calves	30,000	3607 (12%)
Monitoring of registered calves	No. of calves	30,000	3607 (12%)
Capacity building of field officers	No. of participants	150	95 (63.3%)

#### 4.2.3. Goat Development Programme

Main objective of the two nuclear goat farms being the issue of stock for breeding purpose, 248 goats (134 stud goats and 114 female goats) had been issued during the year and it has been the highest issue recorded during the

past decade. Kid mortality had brought down from 8.45% to 4.44%. Project on "Strengthening of Field level goat breeder farms" were provided with 44 number of specially selected Jamunapari stud goats with a potent of to serve 1,201 breedable females enrolled under the project.

#### 4.3. Financial progress

The capital and recurrent financial allocation and expenditure of the division for the year 2013 areas follows:

	Allocation (Rs. Mn)	Expenditure (Rs. Mn)	Achievement %
Capital	189.70	97.34	51.85
Recurrent	2.06	1.29	62.62

## 5. VETERINARY RESEARCH INSTITUTE

### 5.1.Introduction

Veterinary research Institute (VRI) is the sole national level Research Institute, involved in production of vaccines against contagious animal diseases and carryout disease diagnostic, analytical, teaching and technology transfer and advisory services in addition to the research activities in livestock and poultry sector. In view of improving animal health and livestock production in the country a number of innovative livestock products have been produced by the VRI to the farming community and other stakeholders of the industry. On the other hand diagnostic testing, laboratory and advisory services are produced by the VRI with the intention of uplifting socioeconomic status of the livestock farming community. Basic and applied research are conducted in collaboration with various other national and international research

bodies in order to explore the novel concepts and knowledge in the profession.

#### *Main Functions of the VRI*

- Conduct animal production & health research
- Production of Veterinary vaccines
- Supply of biologicals
- Laboratory disease diagnostics & investigation
- Provide analytical facilities
- Provide referral laboratory facilities for the livestock industry and other institutions, both nationally and internationally.
- Provide inputs for Dairy and Poultry Sector
- Provide technology expertise
- Support implementation of regulations and legislative enactments related to livestock sector.

### 5.2.Products and Services

The details of manufacture and issue of veterinary products by the VRI in 2013 are as follows;

#### 5.2.1. Products issued

##### a. Vaccines

Vaccine	Production (Doses)	Issues (Doses)
Hemorrhagic Septicemia (HS) (Oil/ Alum)	69,300	69,301
Black Quarter (BQ)	211,233	250,008
Foot and mouth disease (FMD)	501,000	501,000
Tick fever		
<i>B. bigemina</i>	9,580	3,863
<i>B. bovis</i>	7,480	3,863
Brucella	1,500	1,400
Newcastle Disease (ND)	6,492,800	6,376,300
Fowl cholera	234,960	234,960

**b. Diagnostic Reagents**

Reagent	Quantity Issued
CMT reagent (L)	22
Pullorum antigen (doses)	72,300
RBPT antigen (doses)	1,700
MRT (doses)	1,600

**c. Therapeutic Reagents**

Reagent	Quantity Issued
Teat dip solution (L)	257
Udder infusion base (Vials)	363
Udder infusion	5,000

**d. Starter Cultures**

Starter culture	Quantity Issued
Yoghurt culture vials	115
Curd culture vials	92

**e. Chicks issues from Central Poultry Research Station, Karandagolla**

Chick Type	Number Issued
Day old female chicks	40,743
Day old male chicks	41,754
Two week old chicks for Research	1,384
One month old chicks for Animal Park	97

**f. Forage Specimens& Planting Materials**

Forage specimen	Quantity Issued
Forage specimens for education	60
Forage specimen for establishment	2,410

**5.2.2. Services**

*Examination of specimens*

Specimen Type	No. of Samples
Blood smears for parasites	779
Faecal samples for parasites	212
Litter/ bedding samples	50
Skin scrapings	21
Plasma/blood/serum for brucellosis&leptospirosis	82
Tissue samples for histopathology	489
Tissue samples for microbiology	1,125
Serum for ILT	30
Serum for HPAI	4,377
Coacal swabs for HPAI	2,090

<b>Specimen Type</b>	<b>No. of Samples</b>
Litter for HPAI	29
Frozen egg for HPAI	3
Faecal samples for HPAI	481

**b. Analysis, identification and quality testing of samples**

<b>Sample Type</b>	<b>No. of samples</b>
Feed samples for proximate components & minerals	1,234
Milk & Milk products samples for microbiological quality	113
Milk & milk products samples for compositional quality	603
Plasma samples for minerals	95
Meat species identification	86
Seed samples for viability & germination	22
Soil samples	70
Water samples	41

**c. Field and laboratory investigations**

<b>Investigation Type</b>	<b>No. of investigations</b>
Field Disease Investigations	8
Postmortems	535
Laboratory Disease investigations	322
Field Investigation into nutritional problems	10
Field investigation into Reproductive problems	20
Ration formulations	119
Antibiotic sensitivity test (ABST)	49
Confirmation of contagious / Notifiable diseases	07

**5.3.Clients Registered at VRI**

<b>Place of registration</b>	<b>No.of clients</b>
Coordinating unit	2,964
Central Poultry Research Station	563

**5.4.Research Projects**

Research Projects conducted by VRI during the year are as follows;

01. Study on quality and strategies to improve the quality of locally produced maize  
 Chief Investigator: Dr. N.Priyankarage  
 Duration: 2 years  
 Collaborating scientists: Dr. S.P.Gunarathne, Dr. W. M. P.B.Werasinghe, Dr. M. W. C.D.Palliyaguru, Dr. A .P .D .G.Pathirana, Dr. P S Fernando  
 Status of the project: Completed

- 02.** Cotton Seed Meal & Full Fat Soya as alternatives for SBM in Poultry; Levels, improvements using enzymes & Iron supplementation  
Chief Investigator: Dr. A.P.D.G.Pathirana  
Duration: 2 years  
Collaborating scientists: Dr. N.Priyankarage, Dr S. S. P. Silva  
Status of the project: Continued to 2014
- 03.** Effects of different treatments of rice straw on milk yield and quality  
Chief Investigator:Dr. M.W.C.D.Palliyeguru  
Duration: 1 year  
Collaborating scientists: Dr. N.Priyankarage, Dr. W. M. P.B.Weerasinghe, Dr. A.P.D.G Pathirana, Dr. U.L.P. Mangalika  
Status of the project: Completed
- 04.** Effect of feed grade antibiotics on dietary trypsin inhibitor activities and intestinal health in broiler chickens  
Chief Investigator: Dr. M.W.C.D.Palliyeguru  
Duration: 3 years  
Collaborating scientists: Dr. N.Priyankarage, Dr. W. M. P. B.Weerasinghe, Dr. U.L.P. Mangalika, Dr S. S. P. Silva, Dr. A.Thiskumara  
Status of the project: Continued to 2014
- 05.** Formulation and production of dense total mixed ration (TMR) blocks for ruminants and its effect on the production performance in dairy cows  
Chief Investigator: Dr. W.M.P.B.Weerasinghe  
Duration: 3 years  
Collaborating scientists: Mr. G. G. C. Premalal,Mr, R. M. C. Chandrasena, Dr. N.Priyankarage  
Status of the project: Continued to 2014
- 06.** The freezing point of Milk: The influence of various factors and their bearing on the detection of added water  
Chief Investigator: Dr. U.L.P. Mangalika  
Duration: 2 years  
Collaborating scientists:Dr. N.Priyankarage, Dr. M. W. C. D.Palliyeguru  
Status of the project: Continued to 2014
- 07.** Detection of mycoplasma syanoviae in commercial broilers in NWP  
Chief Investigator: Dr. M.A.R. Priyantha  
Duration: 1 year  
Collaborating scientists: Dr. P. S. Fernando, Dr. N.Liyanagunawardana  
Status of the project: Completed

- 08.** Development of udder infusions for lactating and dry cow therapy  
 Chief Investigator: Dr. P. S. Fernando  
 Duration: 3 years  
 Collaborating scientists: Dr. MAR Priyantha, Dr. N.Liyanagunawardana,  
 Dr. D. L. N. Kumuduni, Dr. T. Manchanayake  
 Status of the project: Continued to 2014
- 09.** Evaluation of the immunity development & economic impact of the  
 usage of SG 9R live *Salmonella* vaccine  
 Chief Investigator: Dr. N. Liyanagunawardana  
 Duration: 2 years  
 Collaborating scientists: Dr. P. S. Fernando, Dr. M.A.R. Priyantha,  
 Dr. H.Kothalawala, Dr. M.Kodithuwakku  
 Status of the project: Continued to 2014
- 10.** Preparation of Direct vat Set culture for yoghurt  
 Chief Investigator: Dr. P. S. Fernando  
 Duration: 2 years  
 Collaborating scientists: Dr. M.A.R. Priyantha, Dr. N.Liyanagunawardana  
 Status of the project: Completed
- 11.** Economic feasibility of management of solid livestock waste through  
 Vermi-composting with crop residues and earth worms  
 Chief Investigator: Mrs.I.K.Leukebandara  
 Duration: 3 years  
 Collaborating scientists: Prof. Mrs. S Premarathne  
 Status of the project: Continued to 2014
- 12.** Socio - Economic Impact of Foot and Mouth Disease in Sri Lanka  
 Chief Investigator: Mr. R.M. Chandrasena  
 Duration: 2 years  
 Collaborating scientists:Dr. R. M.Ariyadasa  
 Status of the project: Completed
- 13.** An Epidemiological Study on Bovine Babesiosis in Selected Provinces  
 in Sri Lanka  
 Chief Investigator: Dr. N. D. S. Dissanayake  
 Duration: 3 years  
 Collaborating scientists: Dr. M. B.Nawarathne, Dr. S.S.Iddamaldeniya  
 Status of the project: Continued to 2014



- 14.** An economic analysis of controlling immature paramphistomiasis in cattle at Galnewa VS range  
 Chief Investigator: Dr. S.S.Iddamaldeniya  
 Duration: 2 years  
 Collaborating scientists: Dr. M. B.Nawarathne, Dr. N. D. S.Dissanayake  
 Status of the project: Continued to 2014
- 15.** Establishment of a confirmatory diagnosis method for Cerebro Spinal Nematodiasis (CSN) in goats  
 Chief Investigator: Dr. S.S. Iddamaldeniya  
 Duration: 1 year  
 Collaborating scientists: Dr. M. B.Nawarathne, Dr. N. D. S.Dissanayake  
 Status of the project: Completed
- 16.** Evaluation of some multi-cut fodder Sorghum varieties for dairy development in Sri Lanka  
 Chief Investigator: Mr.G.G.C. Premalal  
 Duration: 2 years  
 Collaborating scientists: Prof. Mrs. S.Premarathne, Dr. W. Jayawardana, Mr. M. Z. Gafoor  
 Status of the project: Continued to 2014
- 17.** Economic Evaluation of Seed Production for Pasture development in Sri Lanka  
 Chief Investigator: Mr.G.G.C. Premalal  
 Duration: 2 years  
 Collaborating scientists: Prof. Mrs. S.Premarathne, Dr. W. Jayawardana  
 Status of the project: Completed
- 18.** Investigation of Avian Malaria and Leucocytozoon infections in commercial poultry farms in Sri Lanka.  
 Chief Investigator: Dr. S.M.T.S. Manchanayake  
 Duration: 2 years  
 Collaborating scientists:Dr.S. S.Iddamaldeniya, Dr. G. I. S.Perera, Dr. H.Kothalawala , Dr. W. M. P.Bandara  
 Status of the project: Continued to 2014
- 19.** Pathological changes of tissues after ingestion of mycotoxins  
 Chief Investigator: Dr.G.I.S.Perera  
 Duration: 2 years  
 Collaborating scientists: Dr . S. M. T. S.Manchanayake, Dr. P. S.Feranando, Dr. H.Kothalawala, Dr. N.Priyankarage, Dr. P. Jayasooriya  
 Status of the project: Continued to 2014

- 20.** Microbial load, composition, keeping quality and prevalence of *Listeria* spp. in Ready to drink pasteurized milk products  
Chief Investigator: Dr. J.K.H. Ubeyratne  
Duration: 2 years  
Collaborating scientists: Dr. M. D. N. Jayaweera, Dr. U. L. P. Mangalika  
Status of the project: Completed
- 21.** Assessment of potential disease threat posed by backyard poultry in Sri Lanka  
Chief Investigator: Dr. U.K.S.P. Alexander  
Duration: 2 years  
Collaborating scientists: Dr. M D N Jayaweera, Dr J.K.H. Ubeyratne, Dr. P D N Bandara  
Status of the project: Completed
- 22.** Foot and mouth disease outbreaks foci of origine and route of spread of the infection.  
Chief Investigator: Dr. S.A.E. Abeyratne  
Duration: 2 years  
Collaborating scientists: Dr. H. Kothalawala, Dr. S. Puvanendiran, Dr. K. Jayasundara  
Status of the project: Completed
- 23.** A comparative study to establish local production facility for bovine serum suitable for cell cultures & vaccine production.  
Chief Investigator: Dr. S.A.E. Abeyratne  
Duration: 2 years  
Collaborating scientists: Dr. H. Kothalawala, Dr. S. Puvanendiran, Dr. K. Jayasundara  
Status of the project: Continued to 2014
- 24.** Investigation of immune response of locally produced vaccines against Newcastle Disease in commercial layers  
Chief Investigator: Dr. H. Kothalawala  
Duration: 3 years  
Collaborating scientists: Dr. S. Puvanendiran, Dr. K. Jayasundara, Dr. S.A.E. Abeyratne  
Status of the project: Completed

25. Impact of PPRS and PPV on swine production and develop in house assays for the diagnosis  
 Chief Investigator: Dr. S.Puvanendiran  
 Duration: 2 years  
 Collaborating scientists: Dr. H.Kothalawala, Dr. S.A.E.Abeyratne, Dr. G. Rajapaksha  
 Status of the project: Continued to 2014
26. Determination of genetic composition of a dairy cow in NWP  
 Chief Investigator: Dr. W.D. Abayawansa  
 Duration: 2 years  
 Collaborating scientists: Dr. K.M.S.G.Weerasooriya, Dr. H.P.V.D.S. Bandara, Dr. A.D.N. Chandrasiri  
 Status of the project: Discontinued
27. Critical analysis of factors affecting conception rate after artificial insemination in cows  
 Chief Investigator: Dr. W.D. Abayawansa  
 Duration: 2 years  
 Collaborating scientists: Dr. M. B. D.Lakmali, Dr. H.P. V. D. S. Bandara, Dr. A.D.N.Chandrasiri  
 Status of the project: Discontinued
28. Comparison of the production performance between local poultry in CPRS and their crosses with brown shaver and to find out their genetic relationship  
 Chief Investigator: Dr. K.M.S.G. Weerasooriya  
 Duration: 2 years  
 Collaborating scientists: Dr. W. D. Abayawansa, Dr. G.Gunawardana  
 Status of the project: Continued to 2014
29. Formulation of effective organic acid blend to control common enteric disease, salmonellosis in poultry  
 Chief Investigator: Dr. S.S.P. Silva  
 Duration: 3 year  
 Collaborating scientists: Dr. N. Priyankarage, Dr, P.S. Fernando and Dr.A.P.D.G. Pathirana.  
 Status of the project: Continued to 2014

### 5.5.Research Publications - 2013

Details of research publications are in *Annex IV*.

### 5.6. Financial Progress

The financial allocation for capital expenditure and recurrent expenditure for the year 2013 and actual expenditure as given below:

	<b>Allocation (Rs. Mn.)</b>	<b>Expenditure (Rs. Mn.)</b>	<b>Achievement %</b>
Capital	103.01	86.26	83.73
Recurrent	19.35	27.31*	100.00

\*Additional Allocation were provided

## 6. HUMAN RESOURCE DEVELOPMENT DIVISION

### 6.1. Introduction

The main responsibility of Human Resource Development division is to develop human resources in order to meet the present and future needs of the Livestock sector.

HRD Division administers following seven (07) units.

- Institute of Continuing Education for Animal Production and Health (ICEAPH), Gannoruwa, Peradeniya.
- Sri Lanka School of Animal Husbandry (SLSAH), Karandagolla, Kundasale.
- Animal Husbandry Training Center (AHTC), Seppukulama, Anuradhapura.
- The Department Library, Gannoruwa, Peradeniya.
- Information Communicating Unit.
- Livestock Knowledge center, Getambe.
- Livestock Technology Park

### Main Functions of the Division

- Training and technology transfer
- Education and career development
- Information and publicity
- Entrepreneurship development and self-employment support services
- Testing and Evaluation

### 6.2. Training and Transfer of Technology

#### 6.2.1. Training Conducted at ICEAPH

The ICEAPH strives to conduct year round training programs, workshops, seminars to upgrade the knowledge and improve the skills of the officers of this Department and personnel of other organizations who are involved in the livestock industry activities.

Achievement of training conducted during 2013 at ICEAPH is given in Table 6.1. and Table 6.2.

**Table 6.1: Details of Training conducted at ICEAPH**

Category	No. of Programs Planned	No. of Programs Conducted
AP& H Service Officers	29	35
Middle Level Officers	22	12
Development Officers	02	10
Supportive Staff	09	08
<b>Total</b>	<b>62</b>	<b>65</b>

**Table 6.2: Progress of Training Conducted at ICEAPH**

Item	Target	Achievement
Number of Trainees/ participants	1,900	1,567
Number of training man days	3,090	2,693

### 6.2.1 Special training conducted during the year

The special training conducted during 2013 is given below;

Name of the Program	No. of Program conducted	Number of participated
Eco-friendly livestock farming	02	71
Equine medicine	01	30
Graduate Training	08	225
<b>Total</b>	<b>11</b>	<b>326</b>

### 6.2.3. Training at Sri Lanka School of Animal Husbandry (SLSAH), Seppukulama

At SLSAH, Seppukulama, 22 training programs were conducted during the year and 623 trainees participated. The details are as follows:

Category of participants	No. of programs	No. of participants
Government officers	13	311
Farmers	02	75
JICA	01	30
Student	04	179
Diploma student	02	28
<b>Total</b>	<b>22</b>	<b>623</b>

## 6.3. Educational and Career Development

### 6.3.1. Sri Lanka School of Animal Husbandry (SLSAH), Karandagolla, Kundasale

The SLSAH, Karandagolla has been conducting two (02) year Diploma programme in Animal Husbandry.

New batch for the academic year 2012/2014 was started on 2012/05/15. Number of students enrolled for this programme was 88. The batch continued in the first academic year with the practical training programme.

An examination was held in 2013 to select 100 students for A.H. Diploma programme in SLSAH Seppukulama.



Figure 6.1: Diploma students engaged in Practical Training

### 6.3.2. Internship Training for Veterinary Graduates

One (01) internship programme were started during the year 2013 and one programme continued in the year 2013. Details of these programs are given below;

Batch Number	No. of Internees	Date of Commencement	Date of Completion
DAPH/ICE/2013/01	54	2013/02/01	2013/07/31

**6.3.3. Foreign Training**

Details of overseas training received by DAPH officers in 2013 are given in *Annex V*.

**Support for Post Graduate Training**

During the year 2013, HRD Division supported in post graduate fellowships program given in *Annex VI*.

**6.4.Examinations**

The HRD division is responsible for conducting examinations for department officers. Details of examinations conducted by DAPH in 2013 are given in *Annex VII*.

**6.5.Information and Publicity**

**6.5.1. Publications in 2013**

**a. New Prints**

Leaflets	15,000
Guide line	200

**b. Translated print**

Leaflets	2,000
Booklets	6,000

**c. Reprints in 2013**

Leaflets	45,000
Booklets	9,000

**6.5.2. Sale of Publications in 2013**

No. of booklets/leaflets	40,414
No. of photographs (10" x12" size)	92
No. of CD's	24

**6.5.3. Mass Media Activities**

The division continued broadcasting/ telecasting/ publishing programs and articles in various TV Channels/ Radio Stations/Newspapers. Details are given in *Table 6.3*.

**6.5.4. Production of Audio Visual Material**

During the year, six (06) exhibits were prepared.

**Table 6.3: Mass Media Activities in 2013**

Type of Media	No. of Programs (Planned)	Channel/ Station/ News paper	No. of Telecasts/ broadcasts/ releases
TV	06	ITN	10
Radio	24	SLBC	36
News releases	12	News paper	10
Press Conferences	06	All Media	04

**6.5.5. Exhibitions**

Details of exhibition participated in 2013 are as follows.

**Table 6.4: Exhibitions conducted/ participated in 2013**

Category	Venue	No. of Days
National Level	Seethavaka Abhimanaya	03
	Deyata Kirula , Ampara	08
	Govi sathiya ,Wariyapola	05
Provincial Level	Agriculture Exhibition, Vaddakachchi	05
	Ruhunu Pashu Udanaya, Matara	04
<b>Total</b>		<b>25</b>

### 6.6. Entrepreneurship Development and Self-Employment support services

Scheme is an important and highly promising programme carried out by the Division.

The Entrepreneurship development and Self-Employment Support Training

Details of the training conducted during 2013 are as follows;

#### Training of trainer (TOT) program for self-employment

Topic	Venue	No. of Programs	No. of Participants
Small scale milk Processing	Seppukulama	02	59
	Kekanadura	02	69
	ICE	04	82
	Wannigama	01	30
	Pelugahatanna	02	48
<b>Total</b>		<b>11</b>	<b>288</b>

#### Follow up Technical Training Programs

Topic	Venue	No. of Programs	No. of Participants
Small Scale Milk Processing	Seppukulama	01	25
	Nawalapitiya	01	68
	Gamlola	01	30
<b>Total</b>		<b>03</b>	<b>123</b>

### 6.7.The Department Library

The Department Library continued serving as the National level Library for Livestock industry related fields and Veterinary Science.

- Number of members in 2013 - 260
- Number of books/ reports received - 10

### 6.8.The Departmental Hot Line Service

The DAPH maintained a Hot Line Service (Tel: 081-2388463) to facilitate stakeholder needs. The details of performances are given below;

	Activity	Number
1	Total number of clients served	2,404
2	Follow-up service	2,147
3	Clients directed to co-institutions	326
5	Publications sold to clients	7,628
4	Media - livestock news recorded	1,082
6	Paper cuttings collected on livestock	2,242

### 6.9.Technology park

Number of persons visited during the year 2013, was 18,016 which comprising university students.



### 6.10. Financial Progress

The financial allocation for capital and recurrent projects/ activities for the year 2013 and actual expenditure are given below:

	<b>Allocation (Rs. Mn)</b>	<b>Expenditure (Rs. Mn)</b>	<b>Achievement (%)</b>
Capital	32.69	24.62	75
Recurrent	7.81	16.65	100

\*Additional Allocation were provided

## 7. LIVESTOCK PLANNING AND ECONOMICS DIVISION

### 7.1. Introduction

The Livestock Planning and Economics (LPE) Division is responsible for planning, monitoring and evaluation of livestock development programs and activities implemented by the Department to support development of the livestock sector in Sri Lanka. LPE division also maintains the national level data base to collect and compile livestock statistics and data which are accessible to the public and to policy makers, researches, university students. The Data Processing Unit is responsible for data entry, analysis and preparation of reports/documents to the Ministry of Livestock and Rural Community Development and other relevant organizations.

#### *Main functions of the division*

- Identification and formulation of livestock development programs and projects;
- Monitoring, evaluation and economic analysis of livestock development programs and projects of the department;
- Conduct economic studies to assess feasibility and viability of livestock development programs and projects;
- Periodic review of livestock industry and identify issues that need to be addressed for policy formulation;
- Management of livestock data base at national level;

- Co-ordinate livestock development programs with provincial DAPH and other state institutions and organizations;
- Coordinate implementation of e-government policy in the department.

### 7.2. Identification and Designing of Livestock Development Programs and Projects

LPE division is responsible for identification and formulation of livestock development projects and forwarding them to funding agencies. Funding could either be through the National Budget or Foreign Donor Agencies.

#### 7.2.1. Projects for the National Budget- 2014

Seven (07) new projects proposals for 2014 were formulated in collaboration with respective divisions in 2013. These project proposals were forwarded to relevant authorities through MLRCD. Out of these, one (01) project proposal was approved for implementation from the year 2014.

Title of the approved project is "Comprehensive Mastitis Control Programme for Productivity Improvement in Milking Herds".

Furthermore, 21 on-going projects of the DAPH for continuation for coming years were reviewed; proposals forwarded and necessary approvals were obtained.

### **7.3. Monitoring, Evaluation and Economic Analysis of Livestock Development Programs and Projects**

#### **7.3.1. Physical and financial progress review of Departmental programs**

##### **a. Action plan and progress**

Action plan for physical and financial progress review of the DAPH was prepared for the year 2013. The physical and financial progress was monitored monthly on the thrust area basis and reports were submitted to the Ministry.

Capital expenditure utilization of the DAPH was 60.07% in 2013 which was less than the previous year (87.68%). The progress of recurrent fund utilization was 102.27 % in 2013, which was greater than the corresponding figure of 99.71% in the year 2012. The details are given in *Chapter 10*, under the Finance division.

##### **b. Progress Review Meetings of the department**

Physical and financial progress of departmental programs is reviewed at progress review meetings represented by respective directors and relevant officers of divisions. LPE division organised and facilitated to conduct such reviews throughout the year.

#### **7.3.2. Monitoring of Animal Production, Health and Extension activities in Provincial DAPH**

##### **a. Monitoring through Master Returns**

Activities of Provincial DAPH are monitored through master returns

submitted monthly by divisional veterinary offices in the country. Data were processed and analysis reports were prepared and communicated to Provincial DAPH as well as all divisions of the DAPH and the Ministry.

Analysis of selected data is given in *Annex VIII*. Data on animal health activities are given separately under section on animal health division.

### **7.4. Review of Livestock Industries and Management of Livestock Database at National Level**

Availability of reliable statistics is one of the main pre-requisites for any planning and monitoring pertaining to the livestock sector. This is also one of the main responsibilities of the LPE Division which was facilitated by the data processing unit and the data bank.

#### **7.4.1. Data Collection, Compilation and Management**

Data collection systems have been further improved during the year. Data on livestock population, production, prices, imports and exports etc. were collected on Industry- basis. Initiatives were taken by the division to convert this as an electronic livestock statistics database. Ten year data document has been updated.

##### **a. Milk Collection**

Data collected from leading milk processing organizations in the formal milk marketing the year 2013. Total milk collection by 13 key organizations was 200.3 million litres. Central Province and

the North Western Province contributed for this total as 30.6% and 20.5% respectively. Overall milk collection has shown an increase of `18.5 million litres in the year 2013, which is a growth of 10.1 %over the corresponding volume in 2012. District-wise milk collection data for the year 2013 is given in *Annex IX*.

**b. Import and export of animals/animal products and feed ingredients**

Quantities and the value of import of animals, animal products and feed ingredients in 2013 was obtained from Sri Lanka Customs and analyzed. Quantities of Dairy products, Meat and Meat products imported into the country in 2013 totaled 69,452.36 MT and 801.43MT with the value of Rs.37.5billion and Rs.327.6million respectively. Import of Dairy products and meat products has been decreased in the year 2013when compared with the previous year 2012.

Total of 626.6 MT of milk and milk products and 1,621.2 MT of meat and meat products have been exported to other countries during year 2013.

**b. Data Bank**

LPE division maintains the National databank containing all livestock data, statistics and related documents, reports, and bulletins which can be used by DAPH and other state officers, University/ diploma students and private entrepreneurs.

**c. Dissemination of data/statistics**

Important livestock statistics and findings of surveys, studies conducted by the division need to be communicated to relevant officers/organizations and stakeholders. Livestock Statistical Bulletin was compiled and published by the division in 2013. One issues were released during the year and, survey findings and the reports on cost of production, latest livestock statistics were distributed among the DAPH and related organizations, through Livestock Information Bulletin. A total of 88,827 website users were reported in 2013.

**d. Sector Reviews**

**Poultry Industry monitoring committee**

A poultry industry monitoring committee was established in the department to monitor the poultry industry in Sri Lanka in year 2012. This committee is consisted of industry representatives and officers from the department as well. Department of Agriculture is also representing the meeting to facilitate and overcome the issues related to poultry industry. This committee was chaired by the Director General of the Department. Many issues have been addressed during the year 2013 and three (03) such meetings had been conducted. Awareness meeting was held on Proper usage of poultry vaccines in the field. A special meeting with officials of Department of Livestock Services of Nepal also held.

## 7.5. Coordination of Development Programs with Provincial DAPH and special development projects

Several development programs are jointly implemented by the National and Provincial DAPH and technical back-up services and inputs were mostly provided by the National DAPH.

### 7.5.1. Provincial Director's Meetings

LPE division organizes and coordinates Provincial Director's meetings to review on-going livestock development programmes and to discuss on administrative and financial matters. Four (04) such meetings were held during the year 2013.

### 7.5.2. Special Livestock Development Projects

#### a. Improvement of Veterinary Service Delivery System of Field Veterinary Offices

A project to improve services of provincial veterinary offices was commenced in year 2008 as seven (07) year development plan aiming at improving infrastructure facilities of veterinary offices.

Construction works of three (03) veterinary offices were continuing from 2012 in Eastern Province (Rideetenna), North Central Province (Kekirawa) and Northern Province (Karaveddy).

Construction work of three (03) new veterinary offices in Weligepola, Agarapatana and Chenkalady were commenced in 2013.

Construction work of three (03) veterinary offices in Northern (Karaveddy), Eastern (Rideetenna) and North Central (Kekirawa) provinces were completed in the year 2013.

#### b. Programme to Mitigate Environment Issues Pertaining to Livestock Industry

Environmental related problems continued to be the main problem suppressing further development of the livestock sector. A technical back-up system to support Provincial DAPH and the livestock industry in handling matters related to environmental issues had been identified as a priority area by the DAPH. Accordingly, following activities were coordinated and implemented by the LPE division in the year 2013:

- Necessary technical backing was given for preparation of guideline to reduce environmental issues in the field.
- Field visits made to livestock farms reported with environment related issues, by members of the technical team along with the respective veterinary surgeon and, provided necessary guidance/advice.

## 7.6. Publications

The division compiled following publications/reports during the year 2013.

- Action Plan DAPH -2013
- Physical and Financial Monitoring Plan DAPH - 2013
- Annual Report -2012

- Monthly physical and financial Progress Reports of DAPH
- Progress Reports for *Mahinda Chintana Programme*
- Budget Report DAPH, Progress for 2013 and Plans for 2014
- Livestock Development Projects- 2012
- Statistical bulletin-One issues
- Livestock Information Bulletin.
- Action Plan 2013- LPE Division

updating the department website [www.daph.gov.lk](http://www.daph.gov.lk). Livestock data, statistics, maps, departmental activities and details of each division have been incorporated into the web site. Regular updating of news and the events of the department is a valuable feature in the department web site. By the end of the year number of web users have become increased remarkably which has been calculated automatically as 87 users per day. The online application service (e-service) for import and export of animals is also an additional service provided by the department web site.

## 7.7. Other Activities

### 7.7.1. E -Government Programme

Livestock Planning and Economics Division (LPE) is responsible to liaise with ICTA and to handle correspondences regarding Lanka Government Network (LGN) and Government Information Centre (GIC). Dr. K.D. Ariyapala of the LPE division serves as a Chief Innovative Officer (CIO) for ICTA.

The LPE division holds the responsibility of managing and

### 7.7.2. Elephant Tranquilization

The Elephant Tranquillisation Unit of the DAPH, coordinated by this division, continued to provide services in giving protection for elephants used in religious and other type of processions. Veterinarians attached to the DAPH participated in this activity and, during the year 2012 protection was given to 72 processions in various regions island wide.

## 7.8. Financial Progress (LPE Division)- 2013

The financial allocation for capital and recurrent expenditure for the year 2013 and actual expenditure as given below:

	Allocation (Rs. Mn.)	Expenditure (Rs. Mn.)	Achievement (%)
Capital	46.25	34.42	74.4%
Recurrent	0.80	0.72	89.9%

## 8. VETERINARY REGULATORY AFFAIRS DIVISION

### 8.1. Introduction

Division of Veterinary Regulatory Affairs is entrusted the responsibility of implementing the statutory provisions of Acts and Regulations pertaining to the livestock sector.

#### *Main Functions of the Division*

- Strengthen/Improve Animal Quarantine management system in Sri Lanka to prevent entry of exotic animal diseases/illegal imports.
- Trade facilitation of import of animals and animal products of animal origin and other inputs.
- Facilitation of exports of animals and animal products of animal origin by developing export certification to status zoo sanitary information of importing countries.
- Update and monitor the disease status in the world and prepare/revise import health requirements for live animals.
- Quality assurance of processed, further processed poultry meat, frozen fish, animal feed ingredients, veterinary drugs and biological / products.
- Safeguard and protect productive national herd to accomplish a

traceability system and to achieve objectives of the Master Plan.

### 8.2. Animal Quarantine and Inspection Service

#### 8.2.1. Import of Animals, Animal Products and By Products and Post import Quarantine Activities

##### a. Quarantine Holdings

Details on Quarantine holdings (other than the AQS) and the period of quarantine for large/zoo animals in 2013 are given in *Annex X*.

##### b. Import and Quarantine Surveillance

Details of consignments that were subjected to quarantine surveillance in 2013 are given in *Annex XI*.

##### c. Sampling of Imported Poultry (HPAI surveillance programme)

As part of the active surveillance programme carried out against HPAI, imports were closely monitored clinically and laboratory testing was done during the surveillance period. (*Table 8.1*)

**Table 8.1: HPAI Surveillance Programme -Laboratory test results - 2013**

No of farm visits	Total no of samples sent to the laboratory	Test results
24 (AQS, Colombo)	Cloacal swabs - 758 Blood samples - 560 Serum samples - 60	Negative Negative Negative
40 (AQS, BIA )	Cloacal swabs - 3,300 Blood samples- 950	Negative Negative

**d. Consignments Detained/ Destroyed/ Re-exported in the Year 2013**

Details of consignments of Animals, Animal Products and Animal By-Products that were not allowed to enter into the country in 2013 due to non-conformity with our import health requirements are given in *Annex XII*.

**8.2.2. Export of Animals, Animal Products and By Products**

**a. International Veterinary Health Certificates for Meat**

Details of export Health Certificates issued by the Chief Animal Quarantine Officer (CAQO) in 2013 are given in *Table 8.2*.

**Table 8.2: Health certificates issued for export (2012-2013)**

Item	No. of Health certificates issued	
	2012	2013
Ornamental fish	2,583	2375
Dogs	135	102
Cats	73	72
Poultry	60	31
Hatching eggs	-	179
Pet Bird	26	11
Zoo Animals	03	06
Elephant	02	04
Rabbit/Rat/Hamsters/G. Pig	02	01
Animal Products (Meat & Meat Products)	3,584	3054
Table Eggs	582	836
Fish & Fish products	35	-
Animal by - Products	177	199
Prawn/Crabs/Lobsters	53	-
Leather	33	27.2

**b. Exports**

Details on consignments of Animals, Animal Products and Animal By-Products that were subjected to animal quarantine inspections and approved for export are given in *Annex XIII*.

**8.3. Regulatory Activities - Livestock Industry**

The VRA division facilitates international trade in animals and animal products and animal by products through review and recommendations of request for imports.

**8.2.3. Inspection of Animal Feed Mills**

As Authorized Officers appointed under the Animal Feeds Act AQO's participated in inspection of six (06) feed mills in 2013.

**a. Poultry**

The regulatory activities carried out in 2013 in related to poultry industry are given in *Table 8.3*.



**Table 8.3: Regulatory activities carried out in 2013**

Activity	Description	Number
Establishment of New Poultry Breeding Farms	Applications received	03
	Establishment of new poultry breeding farms	Broiler - 03 Layer - No
	No. of new hatcheries/ breeder farms approved for import of parents	02
Import of Poultry and Poultry Products	No. of applications received/ reviewed	210
Export Processing Centers	Renewal of Registrations	00
	Surveillance Audits	14

**b. Other animal , animal and animal by products**

Regulatory activities carried out during the year 2013 in respect to livestock and livestock products are given below;

Activity	No. of Applications received	Number Approved	Number of animals/ heads
Import of animals			
▪ Large Animals/other animals	10	10	40
▪ Zoo Animals	03	03	18
▪ Dogs and cats	264	261	Male 45 Female 98
▪ Live Fish	39	39	
Import of animal products			
• Meat and meat products			
▪ Frozen Fish	107	104	
▪ Semen	590	590	
Animal by-products			
▪ Finished Leather	130	130	
▪ Hair/bristles/wool	101	101	
▪ BSE related products	209		

**8.4. Veterinary Drug Control Authority**

Under the provisions of Animal Diseases Act, No.59 of 1992 and its regulations Veterinary Drug Control Authority (VDCA) has been established to exercise control over the manufacture, import, export, sale and use of veterinary pharmaceuticals and biological products in order to

safeguard the animal owners and the livestock industry.

Dr. A.P.Wicramasinghe was appointed as the Registrar of the VDCA from April 2013. During the year, eight (08) committee meetings of VDCA were held in Peradeniya

**a. New drugs registered**

Eighty eight (88) new drugs registered in 2013. Details are as follows;

1. Antimicrobial	37
2. Anthelmintic	04
3. Antiprotozoal/ Anticoccidial	06
4. Ectoparasiticide/Endoectoparasiticide	06
5. Vaccine	21
6. Vitamin/Mineral Supplement	04
7. Anti inflammatory	05
8. Disinfectant	05
<b>Total</b>	<b>88</b>

**b. Invoice Approvals**

During the year 487 invoices were approved by VDCA, to import veterinary pharmaceuticals and biological products for the worth of 814.73 Million Sri Lankan rupees into Sri Lanka.

**c. User Permit Approvals**

During the year 94 user permits were approved. Details are given below;

1. Vaccine	73
2. Vitamin/Mineral Supplement	01
3. Antimicrobial	05
4. Antiprotozoal/ Anticoccidial	01
5. Steroid	01
6. Hormone	02
7. Other	11
<b>Total</b>	<b>94</b>

It should be noteworthy that veterinary Pharmaceutical manufacturing industry in Sri Lanka had been so advanced that the private sector involved could be driven into a phase of performance at required standards with GMP. A system has been introduced by VDCA to further advance the industry and in the very near future locally produced veterinary pharmaceuticals of quality

would be granted free sales certificate for the first time in VDCA history to be placed not only on local market, but also on export market. The increasing trend seen in the current year towards the production of not only veterinary pharmaceuticals but also disinfectants of quality is expanding further contributing to the economic prosperity of Sri Lanka.

**8.5. Implementation of Animal Feed Act**

Under the provisions of Animal Feeds Act, No.15 of 1986 and its regulations, the Animal Feed Advisory Committee (AFAC) has been established to exercise control over the manufacture, import, export, sale and use of animal feeds in order to ensure the quality at the local market.

Following members functioned as the members of AFAC in 2013.

1. Dr. W. K. De Silva - Director General
2. Prof. S.S.E.Ranawana - Expert
3. Dr. K. Samarasinghe - Dean, Faculty of Agriculture
4. Dr.S.S.P.Silva - Head , VRI
5. Mr. K.P. Krishnamoorthy - Industry representative
6. Dr.(Ms) T.A.C.Tiskumara - Animal Feed Registrar

During the year, three (03) committee meetings of AFAC were held in DAPH, Peradeniya. Nineteen (19) large, medium and small-scale registered Animals feed manufacturing establishments and Three (03) establishments for manufacture and export of feed additives, supplements and premixes were also in operation during the year.

The details of activities performed during the year are as follows;

**a. Renewals/ new licenses for Animal Feed**

Activity	Number
No. of renewal of animal feeds	1,091
No. of new licenses issued; For Animal feed Manufacture	23
For Animal feed Imports	248

**b. Collection of Turn over Returns**

Turnover returns were collected from all registered animal feed manufactures in 2013, Based on these turn over returns total animal feed production by registered animal feed manufacturers for the year 2013 is given below;

Compound Animal Feed Production	2012 (MT)	2013 (MT)
Large scale feed millers	387,318.7	384,872.4
Self-mixers (45% - 50% of total production)	297,601.7	48/8,242.2

**Table 8.4: Compound animal feed production by type: 2012-2013**

Type of Feed	Quantity 2012 (MT)	Quantity 2013 (MT)
Poultry Feed	363,736.64	384,872.40
Cattle Feed	14,687	94,331.75
Pig Feed	3,990.27	2067.66
Shrimp Feed	10.00	391.58
Horse Feed	219.40	407.10
Goat Feed	78.25	0.25
Feed Premixes	595.32	303.99
Other Feed	4,000.95	5,867.55
Self-mixed	297,601.70	384,217.50
<b>Total</b>	<b>684,920.44</b>	<b>872459.78</b>

\* Source: TOR -2013 (by Registered Animal feed manufacturers)

Type and the quantity of poultry feed products manufactured by approved feed manufacturers in 2012 and 2013 are given in *Table 8.5*.

**c. Usage of Raw Materials**

Based on approvals considering for imports by feed manufactures and importers major row material imports are given in *Annex XIV*.

**Table 8.4: Poultry feed production by category (2012-2013)**

Type of Feed	Quantity 2012(MT)	Quantity 2013(MT)
Chick Starter	4,187.49	8,964.98
Layer Grower	7,863	7,192.18
Layer	26,463.69	32,636.46
<b>Total Layer Feed</b>	<b>3,8514.8</b>	<b>48,763.21</b>
Broiler Starter	95,375.69	88,907.7
Broiler Finisher and Grower	171,078.75	191,360.89
<b>Total Broiler Feed</b>	<b>266,454.44</b>	<b>267,174.59</b>
Broiler Breeder	54,094.77	52,357.6
Layer Breeder	4,673.25	3,483.00
<b>Total Breeder Feed</b>	<b>58,768.02</b>	<b>55,840.6</b>
Total Layer Feed	38,514.8	48,763.21
Total Broiler Feed	26,645.44	26,7174.59
Total Breeder Feed	58,768.02	55,840.6
<b>Total Poultry Feed</b>	<b>123,928.26</b>	<b>384,872.40</b>

\* Source: TOR -2013 (by Registered Animal feed manufacturers)

**d. Implementation of BSE regulations on Animal feed imports**

All imports of Animal Feed, Feed ingredients and Feed additives were screened prior to importation as a measure to prevent entry of BSE causative agent into the country. A total of 46 permits related to different products of Meat and Bone meal (Quantity - 16728 MT) of bovine origin and 2236 permits for Non-bovine origin products were screened in 2013.

**e. Export of Animal feed**

Three (03) export establishments were in operation during the year.

- Number of export certificates issued for poultry feed and pre-mixes - 292
- Quantity exported (pre-mixes)
- 18062 MT and 69020 Litres.

**8.6. Animal Identification and Traceability Programme**

During the year, measures have been taken to establish an animal identification and traceability system and a central livestock farm database. Total of 228,493 ear tags have been issued to provincial DAPH during the year 2013.

### 8.7. Financial progress

The capital and recurrent financial allocation and expenditure for the year 2013 areas follows

	<b>Allocation (Rs. Mn)</b>	<b>Expenditure (Rs. Mn)</b>	<b>Achievement (%)</b>
Capital	54.10	48.75	90.12
Recurrent	2.43	2.97	100.00*

\*Additional Allocation were provided

## 9. ADMINISTRATION DIVISION

### 9.1. Introduction

The main responsibility of this division is managing staff activities and supporting services to achieve objectives of the Department.

#### *Main functions of the division*

- Attend to establishment matters related to all staff of the Department of Animal Production and Health;
- Handling correspondences regarding implementation of Service Minute of the Animal Production and Health Service;
- Attend to matters regarding the pensions/ loans/ quarters/ lands/ Agrahara scheme and legal issues of the department;
- Handling correspondences regarding recruitments, promotions, transfers and appraisals of the staff; and
- Office Management.

### 9.2. Present Cadre Positions of the Department

The present approved cadre positions of divisions (Animal Health, Animal Breeding, Veterinary Research, Human Resource Development, Livestock Planning and Economics, Veterinary Regulatory Affairs, Administration and Finance) of the department amounted to 862 and actual cadre position was 618 (Project I: 172 Project II: 272 and Project III: 223). Details of cadre positions are given in the Annex XV.

### 9.3. Approval from the Management Service

Approval has been granted by the Management Services Department during the year 2013 for 862 officers/staff which comprises of 72 different categories (DMS/G3/1-Vol-1 dated 2013.02.11 and DMS/G3/1-Vol-2 dated 2013.02.11 and DMS/G3/1/T dated 2013.03.15 and DMS/G3/1/T dated 2013.05.31 and DMS/G3/1-Vol-1 dated 2012.09.06 and DMS/G3/1-Vol-2 dated 2013.09.13 and DMS/1145 dated 2013.012.23).

### 9.4. Appointments

Officers have been appointed to cover up the duties of following posts;

- Assistant Director (Animal Feed Regulatory affairs)
- Assistant Director (Livestock Regulations and Animal Welfares)
- Assistant Director (Animal Quarantine)
- Assistant Director (Entrepreneurship Promotion)

Following new appointments were made during the year 2013.

- Veterinary Surgeon -28
- Research Assistants - 09
- Drivers - 01
- Livestock Assistants - 09
- Field Helper - 22

### 9.5.Promotions

Promotions given during the year are as follows;

- Animal Production and Health Service(Super numerary - class I) - 12
- Animal Production and Health Service - class I and II - 21
- Livestock Development Officer - special class (interview result sent to secretary MLRCD) - 03
- Livestock Development Officer II A (Initiated) - 06
- Research Assistant (special) Application Called - 02
- Research Assistant II A -(Initiated) - 12

### 9.6. Transfers

Details of transfers made to and from the DAPH are stated below;

Transfer to DAPH- 13

Transfer from DAPH - 14

### 9.7. Retirements

Details of staff members who have retired from the service in 2013 are as follows;

Additional Director General	01
Accountant	01
Administration Officer	01
Livestock Officer	01
Livestock Development Officer	01
Chief Management Officer	01
Management Assistants	02
Lab Assistant	03
Research Assistant	01
Field Assistants	08
Driver	02
Officers Assistant	02
Watcher	01

### 9.8.Resignations

The number of resignations in the year 2013 as follows:

Research Assistants - 02

### 9.9. Vacation of Post

Two (02) graduate officers and two (02) field assistants have been vacated from the service in year 2013.

### 9.10. Releases from the DAPH on permanent basis

There were no releases from the DAPH on permanent basis during the year 2013.

### 9.11. Loans Approved

Type of loan	No.	Amount (Rs.)
Distress Loan	134	12,876,922.00
Property Loan	12	20,974,160.00
Bicycle Loan	1	6,000.00

### 9.12. Insurance Payments

During the year, 115 applications were approved for "Agrahara" insurance scheme.

### 9.13. Financial Progress

The capital and recurrent financial allocation and expenditure for the year 2013 are as follows:

	<b>Allocations (Rs. Mn)</b>	<b>Expenditure (Rs. Mn)</b>	<b>Achievement ( % )</b>
Capital	0.45	0.34	75.5
Recurrent	8.95	7.31	81.6



## 10. FINANCE DIVISION

### 10.1. Introduction

The Departmental Head pertaining to the financial activities for the year 2013 was 292. The activities of the department were performed under two (02) Programs and three (03) projects. Financial allocations and the expenditure summary for the year 2013

are as in Annex XVI. A sum of Rs. 319.856 million for the recurrent expenditure and Rs. 482.900 million for the capital expenditure was received by the Department for the year 2013, totaling Rs. 802.756 million.

### 10.2. Allocations

#### a. Departmental Allocations

Head: 292

	Estimated allocation (Rs.)	Supplementary allocation received from the Treasury (Rs.)	Net allocation (Rs.)	Expenditure (Rs.)	Percentage of the expenditure
Recurrent (Rs.)	311,556,000	8,300,000	319,856,000	319,446,383	99%
Capital (Rs.)	482,900,000		482,900,000	320,126,376	66.29
<b>Total (Rs.)</b>	<b>794,456,000</b>	<b>8,300,000</b>	<b>802,756,000</b>	<b>639,572,759</b>	<b>79.66</b>

#### Allocations received from other Ministries and Departments

Vote	Allocation (Rs.)	Expenditure (Rs.)	Percentage of the expenditure
140-2-3-14-2502	4,514,909	2,984,235	66.09%
140-2-3-20-2502	300,000	274,418	91.47%

### 10.3. Public Servants' Advance Account "B"

	Limits of the Annual Estimates	Actual Value
Balance carried forward		72,120,081.87
Maximum debit limit	28,000,000	23,001,635.76
Minimum credit limit	15,000,000	2,801,491.50
Maximum limit of the debit balance	110,000,000	17,132,153.74
	Credits not affecting the limits	6,212,614.86
	Balance brought down	74,578,440.53

### 10.4. General Deposit Account

The balance of the General deposit account of the Department as at 31.12.2013 was Rs. 17,200,370/=. It was prepared as follows:

6000/0000/00/0015/0147/000 - 17,200,370.00

## 10.5. Departmental Income

The income received by the Department for the year 2013 is given in *Table 10.1*:

**Table 10.1: Departmental income - 2013**

Income Subject No.	Particulars of the Income	Total income Received (Rs.)
2002-01-01	Rent	4,036,382
2002-02-99	Loan interest	3,220,208
2003-01-00	Departmental sales	41,784,554
2003-02-99	Other	1,667,062
2003-99-00	Other receipts	1,403,800
2004-01-00	W& OP	9,545,429
	<b>Total</b>	<b>61,657,437</b>

Rs.584.38 million was obtained from the Treasury for the activities of the department and Rs.61.65 million received as income, miscellaneous revenue and there was no balance.

## 11. FOREIGN FUNDED PROJECTS

There was one (01) foreign funded project in operation during the year 2013.

### 11.1. Project on Small Scale Dairy Farming Improvement through Genetic and Feeding Management Improvement (GFMI) in Sri Lanka (Implemented by Animal Breeding Division - JICA funded)

**Duration:** April 2009 - March 2014 (05 years)

**Target Areas:** 4 Districts in Central Province and North Western Province

- Kandy district, Matale district, Nuwara Eliya district in Central Province
- Kurunegala district in North Western Province

**Target Group:-** Relevant Insemination (AI) Centers at Kundasale and Polonnaruwa, DAPH

- Relevant National Livestock Development Board (NLDB) officers, especially at Dayagama and Andigama farms.
- Veterinary surgeons (VS) and livestock development instructors (LDI) at selected sites in Central and North-Western provinces.
- Farm families at the corresponding areas as model farmers and satellite farmers.

### Project Purpose:

The techniques and institutional set-up for small scale dairy farming improvement are developed through breeding and feeding & dairy management improvement in the target areas.

### Outputs:

1. Suitable progeny testing method is developed in Sri Lanka.
2. Appropriate AI techniques related to progeny testing are confirmed.
3. Feeding and dairy management of dairy farmers are improved.

### Achievements - 2013

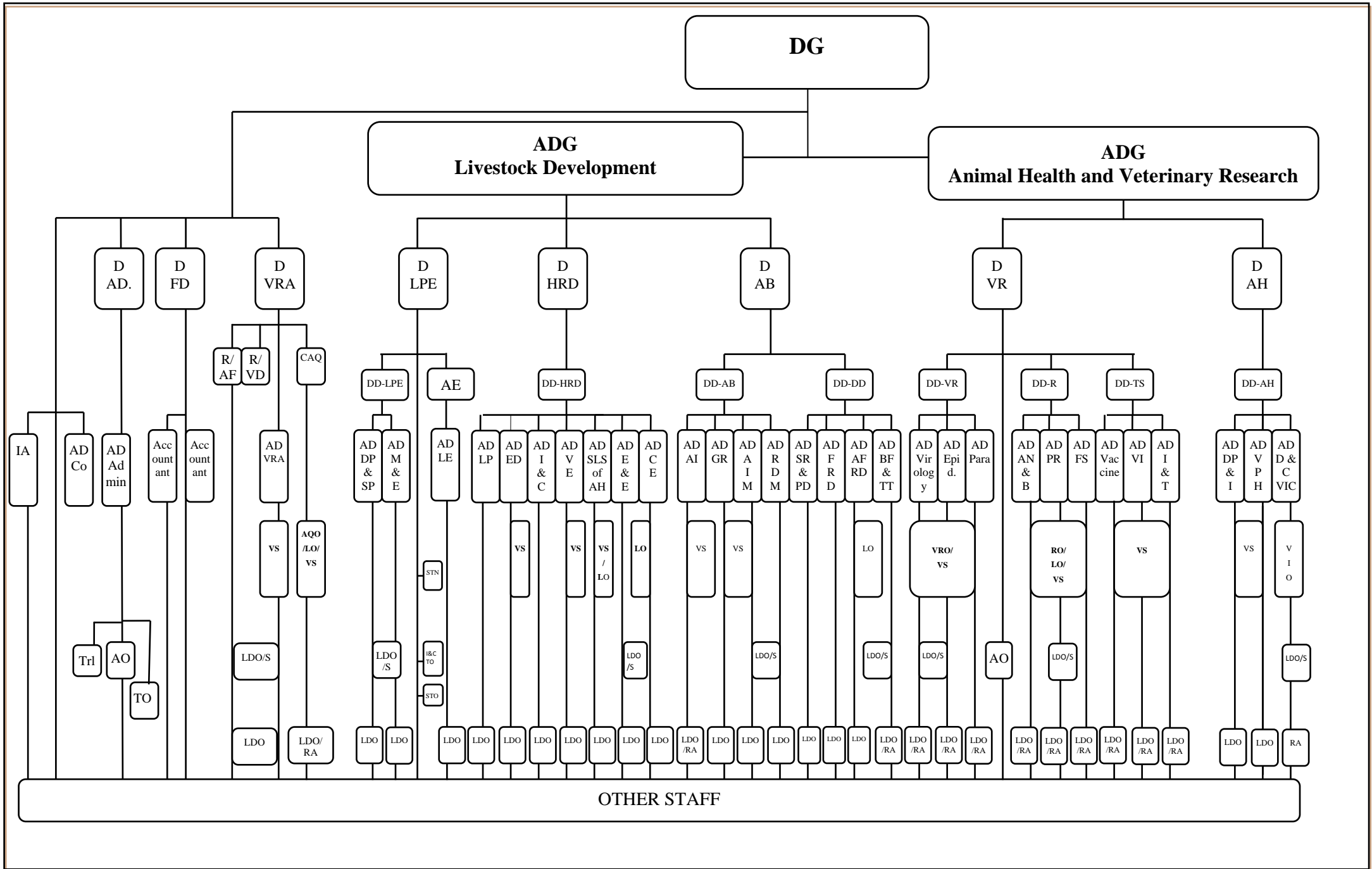
- An appropriate technique of genetic evaluation was transferred to Central Province of DAPH.
- Methodology in data management and pedigree management were transferred to NLDB Andigama farm officials.
- Awareness program on progeny testing was carried out in Central Province
- Awareness program on progeny testing during AI training courses at Polonnaruwa AI center were carried out by a C/P.
- A short term expert, Dr. Shioya developed manuals for risk management and gave lectures to staff members of staff members in Kundasale AI center and DAPH officers.

- Technical training of improved AI program was carried out to the field staff of selected NLDB farms.
- A short term expert, Mr. Takahashi made advices to AI practical examination in July 4th.
- In 2013, 15 Farm Day programs were conducted in 4 districts and 3 Farm Day programs were implemented beyond the model farm area in Polonnaruwa District and Anuradhapura District.

## **Annexures**

Annex I	Organizational Structure of the DAPH
Annex II	Key Data on the Poultry Industry (2012- 2013)
Annex III	Activities Performed at Veterinary Investigation Centres - 2013
Annex IV	Research Publications - 2013
Annex V	Names of Officers Attended to Overseas Training/Meetings Workshops/Visits - 2013
Annex VI	Support for Local Post graduate studies
Annex VII	Details of Examinations Conducted in 2013
Annex VIII	Provincial Activities
Annex IX	Milk Collection by Main Milk Collecting Organizations - 2012-2013
Annex X	Quarantine Holdings and the Period of Quarantine - 2013
Annex XI	Details of Consignments subjected to Quarantine Surveillance in 2013
Annex XII	Details of Consignments Destroyed/ Detained in - 2013
Annex XIII	Export of Animals, Animal Products and Animal By-Products - 2013
Annex XIV	Raw Materials Usage for Compound Feed Production by Registered Animal Feed Manufactures - 2013
Annex XV	Present Cadre Positions of the Department
Annex XVI	Financial Allocation and the Expenditure Summary 2013

# Organizational Structure - Department of Animal Production and Health



## Abbreviations

DG	- Director General Dept of Animal Production and Health	DD-VR	- Deputy Director, Veterinary Research	AD-CE	- Assistant Director, Continuing Education
ADG	- Additional Director General	DD-R	- Deputy Director, Research	AD-AI	- Assistant Director, Artificial Insemination
D/AD	- Director, Administration	DD-TS	- Deputy Director, Technical Research	AD-GR	- Assistant Director, Genetic Resources
D/FD	- Director, Finance	DD-AH	- Deputy Director, Animal Health	AD-AIM	- Assistant Director, Artificial Insemination Monitoring
D/VRA	- Director, Veterinary Regulatory Affairs	IA	- Internal Auditor	AD-RDM	- Assistant Director, Reproductive Diseases Management
D/LPE	- Director, Livestock Planning and Economics	AD-Co	- Assistant Director, Coordinating Service	AD-SR & PD	- Assistant Director, Small Ruminants and Poultry Development
D/HRD	- Director, Human Resource Development	AD-Admin	- Assistant Director, Administration	AD-FRD	- Assistant Director, Farm Resources Development
D/AB	- Director, Animal Breeding	AD-VRA	- Assistant Director, Veterinary Regulatory Affairs	AD-VI	- Assistant Director, Veterinary Investigation
D/VR	- Director, Veterinary Research	AD-DPSP	- Assistant Director, Development Planning and Special Projects	AD-PR	- Assistant Director, Pasture Research
D/AH	- Director, Animal Health	AD-M&E	- Assistant Director, Monitoring and Evaluation	AD-AFRD	- Assistant Director, Animal Feed Resources Development
R/AF	- Registrar, Animal Feeds	AD-LE	- Assistant Director, Livestock Economics	AD-BF & TT	- Assistant Director, Base Farm and Technology Transfer
R/VD	- Registrar, Veterinary Drugs	AD-LP	- Assistant Director, Livestock Promotion	AD-Virology	- Assistant Director, Virology
CAQO	- Chief Animal Quarantine Officer	AD-ED	- Assistant Director, Enterprises Development	AD-Epid	- Assistant Director, Epidemiology
DD-LPE	- Deputy Director, Livestock Planning and Economics	AD-I&C	- Assistant Director, Information and Communication	AD-Para	- Assistant Director, Parasitology
AE	- Agriculture Economist	AD-VE	- Assistant Director, Veterinary Extension	AD-AN&B	- Assistant Director, Animal Nutrition and Breeding
D-HRD	- Deputy Director, Human Resource Development	AD-SLSAH	- Assistant Director, Sri Lanka School of Animal Husbandry	AD-FS	- Assistant Director, Farming Systems
DD-AB	- Deputy Director, Animal Breeding	AD-E&E	- Assistant Director, Examinations and Evaluations	AD-Vaccine	- Assistant Director, Vaccine
DD-DD	- Deputy Director, Dairy Development				

AD-VI	- Assistant Director, Veterinary Investigations
AD-IT	- Assistant Director, Information Technology
AD-DP&I	- Assistant Director, Disease Prevention and Information
AD-VPH	- Assistant Director, Veterinary Public Health
AD-D&CVIC	- Assistant Director, Diagnostics and Coordination of veterinary Investigation Centers
VS	- Veterinary Surgeon
AQO	- Animal Quarantine Officer
LO	- Livestock Officer
STO	- Statistical Officer
STN	- Statistician
I&CTO	-Information & Communication Technical Officer
VRO	- Veterinary Research Officer
RO	- Research Officer
VIO	- Veterinary Investigation Officer
AO	- Administrative Officer
TO	- Technical Officer

LDO/S	- Livestock Development Officer/Special
Trl	- Translator
LDO	- Livestock Development Officer
RA	- Research Assistant
<b><u>Other Staff</u></b>	
Associate Service Officers	
Management Assistants	
Primary Grade Staff	



### Key Data on the Poultry Industry (2012 - 2013)

Activity	2012	2013	Growth (%)
1. Procurement of Grand Parent and Parent stock			
Grand Parent Stock (Broiler)	17,740	25,790	45.38
Parent Stock('000)			
Broiler	1,064.60	1,185.35	11.34
Layer	72.45	88.55	22.23
2. Production of Day - Old Chicks(m)			
Broiler	109.83	110.71	0.80
Layer	7.79	7.38	-5.26
3. Production of Poultry Feed (MT)			
	715.24	769.10	7.53
4. Export of Poultry Products			
Day- Old Chicks	107,944	51,656	-52.15
Chicken and Chicken Products (MT)	969.60	1,524.50	57.23
Table Eggs	2,147,822	3,437,226	60.03
Hatching Eggs	397,590	5,763,043	1,349.49
5. Import of Poultry Products			
Chicken and Chicken products (MT)	844.52	352.46	-58.27
Egg Products (MT)			
Egg Powder	9.82	11.90	21.18
Liquid Egg	74.80	110.53	47.76

## Activity Performs at Veterinary Investigations Centers -2013

Programme	Activity	Total
1. Disease Investigation in the field	1.1 Field Investigation	376
	1.2 Sample collection for testing	2793
	1.3 Investigation Reports	319
	1.4 Follow-up / further investigation	121
2. Laboratory Service for disease diagnosis	2.1 Post-mortem examinations	
	- Poultry	2324
	- Other Species	266
	2.2 Testing of samples	
	- Bacteriological	4281
	- ABST	1356
	- Parasitological - Blood	4379
	- Dung	2850
	- Skin	160
	2.3 Testing of milk samples	20
	- CMT	4582
	- ABST	1241
-Gurber test	585	
- Milk Analysis (SG/Fat/SNF/TS)	7902	
2.5 Laboratory reports	9667	
2.6 Samples dispatch for further testing	1753	
3. Vaccine Production & Vaccination	3.1 CPD Vaccine (No. of farms)	601
	3.2 Wart Vaccine (No. of doses)	478
	3.3 Babesiosis Vaccine	2082
4. Supply of lab. Inputs to Veterinary Offices	4.1 Distilled water (Litre)	779.25
	4.2 CMT reagent (Litre)	147.3
	4.3 Udder base (vials)	5404
	4.4 Teat dip solution (Litre)	1959
	4.5 Slides	1482.5
	4.6 Swabs	728
5. Dairy farm Health Improvement project	5.1 New farm registration	1513
	5.2 GIS Mapping	978
	5.3 Farm Visits	1848
	5.4 No. of Dairy cows tested	7238
	5.5 Mastitis screening (CMT)	13558
	5.6 milk sample testing (ABST)	931
	5.7 Animal tested for parasitism	6317
	5.8 Teat dip solution issued (L)	1711
	5.9 Animal tested for brucellosis/MRT	244

Activity Performs at Veterinary Investigations Centers -2013

Annex III cont.....

Programme	Activity	Total
6. Brucellosis control Programme	6.1 Field investigations	179
	6.2 Screening dairy herds (MRT)	914
	6.3 Animal sreening in suspected herds (RBPT)	1,632
	6.4 Vaccination of Animals	5,932
7. Salmonella Control Programme	7.1 No of Breeder farm visits	51
	7.2 No of birds tested	13,618
	7.3 No of birds culled	104
	7.4 No of Hatchey visits	93
	7.5 No of Hatchey samples tested	2,719
8. Avian Influenza surveillance programme	8.1 No of serum samples	3,649
	8.2 No of dropping samples at Hotspots	813
	8.3 No of cloacal swabs ( Backyard)	989
	8.4 No. of sample (live bird market)	60
	8.5 No of Training as resource personal	130
9. Animal Feed Analysis	9.1 Testing of Feed samples	9
	9.2 Samples dispatch for further testing	11
10. Inspection of Export aquaculture farm	10.1 Aquaculture Farm visits	3
	10.2 Testing of samples	984
	10.3 Advisory service	285
. Revenue (Rs.)		1,143,728

## Research Publications – 2013

01. Abeykoon, A.M.H., Ubeyratne, J.K.H., Jayaweera, M.D.N., Senasinghe, N.D., Wijayarathna, J.M.R.V., Karunaratna, A.M.D.S., Wijemanne, L.M.P. and Karunaratne, G.M.C.R. (2013). An Outbreak of Haemonchosis due to possible Anthelmintic resistance in a goat farm in the North Western province of Sri Lanka. 64<sup>th</sup> Annual Convention of the Sri Lanka Veterinary Association.
02. Adikari, A.A.S.Y., Silva, S.S.P., Priyankarage, N., Pathirana, A.P.D.G., & Kariyawasam, S. (2013). Efficacy of natural yeast cell wall polysaccharides against commonly used antibiotic growth promoters in broiler diets in Sri Lanka. *In World's Poultry Science (Abstracts) XII Annual Sessions*.
03. Attanayake, P.M.G.S.K., Pathirana, A.P.D.G., Priyankarage, N., Silva, S.S.P., & Nayananjali, W.A.D. (2013). Effect of replacing Soya bean meal with Cotton seed meal in broiler rations. *In proceedings of undergraduate research symposium of Faculty of Agriculture, Rajarata University, Sri Lanka*
04. Alexander U.K.S.P, Jayaweera M.D.N. and Ubeyratne J.K.H (2013) Serogroups of virulent *Escherichia coli* strains isolated from chicken. 65<sup>th</sup> Annual scientific sessions of Sri Lanka Veterinary Association. 09 ( Best presentation in the Animal Health Session- Scientific Awards 2013)
05. Alexander UKSP, Jayaweera, MDN, (2013) High prevalence of antibiotic resistance in Poultry Pathogenic *Escherichia coli* in Sri Lanka. XII<sup>th</sup> Annual scientific sessions of World Poultry Science Association 14-15
06. Erandathi, S.A.T., Premaratne, S. and Premalal, G.G.C. (2013). Yield, chemical composition and adverse factors of different varieties of sorghum (*Sorghum bicolor* L. Moench) and hybrid Napier var. CO3 (*Pennisetum americanum* x *P. purpureum*) in mid country of Sri Lanka. *Proceedings of 23<sup>rd</sup> Annual Students Research Session, Dept. of Animal Science, Faculty of Agriculture, University of Peradeniya, Sri Lanka. pp. 17-18.*
07. Fernando, P.S., Manchanayake, S.M.T.S., Priyantha, M.A.R., Liyanagunawardana, N. De Alwis, P.S., Silva, S.S.P. (2013). Status of subclinical enteritis and anti microbial susceptibility of *Clostridium perfringens* in commercial poultry farms in Sri Lanka (In) *Proceedings of 12<sup>th</sup> Annual Scientific sessions of World Poultry Science Association, Sri Lanka Branch 18<sup>th</sup> May, 16-19*
08. Gunasegaram, S., Liyanage, R., Jayawardana, B.C., Fernando, P.S., Vidanarachchi, J.K. (2013). Investigating *in vivo* hypoglycemic and antioxidative capacity of banana (*Musa acuminata*) blossom incorporated experimental diets in Wistar rats (*Rattus norvegicus*) fed with cholesterol. (In) *Proceedings of 23<sup>rd</sup> Annual Student Research Session, Department of Animal Science, University of Peradeniya, Dec 21<sup>st</sup>, pp 41.*
09. Gunawardana N, Chandrasekara S, Hettiarachchi G, Perera S, Jagoda S, Fernando P, Gamage D and Ubeyrathne (2013). Brucellosis in Sri Lanka: A review of the epidemiology and control strategies, and recommendations for future control strategies. South Asia Regional One Health Symposium, 2-6<sup>th</sup> December, Paro, Bhutan.

10. Hussein, M., Harvatine, K., Weerasinghe, W.M.P.B., Sinclair, L.A., and Bauman, D. E. 2013. Conjugated linoleic acid-induced milk fat depression in lactating ewes is accompanied by reduced expression of mammary genes involved in lipid synthesis. *Journal of Dairy Science* 96: 1-10.
11. Jayawickrama, D. R., Weerasinghe, P. B., Jayasena, D. D. and Mudannayake, D. C. 2013. Effects of supplementation of Urea Molasses Multinutrient Block (UMMB) on the performance of dairy cows fed with good quality forage based diets with rice straw as night feeding. *CNU Journal of Agricultural Science*. 40 (2): 123-129.
12. Kumudnie, D.L.N., Manchanayake, S.M.T.S., Liyanagunawardana, N., DeAlwis, S.Fernando, P.S. (2013). Subclinical mastitis :A comparison of prevalence between a mid -country and a low-country dairy farm. The proceedings of 65<sup>th</sup> Annual scientific sessions of the Sri Lanka Veterinary Association 14 June , Vol 60 , pp 12.
13. Kumudinie, D.L.N., Mahaaarambe, D.S., Ratnayake, R.W. (2013). Antimicrobial Resistant Patterns in causative agents of Bovine mastitis in the Ratnapura District. The proceedings of 65<sup>th</sup> Annual scientific sessions of the Sri Lanka Veterinary Association 14 June, Vol 60, pp 11.
14. Liyanagunawardana, N., Fernando, P.S., Priyantha, M.A.R., Manchanayake, S.M.T.S., Wijewardana, G., Samarakoon, S.A.T.C. (2013). (In) Proceedings of *The Young Scientists Forum Symposium of the National Science and Technology Commission, Young Scientists Forum 18<sup>th</sup> January, pp 28*.
15. Madushan, J.A.R., Himali, S.M.C., Vidanarachchi, J.K., Fernando, P.S. (2013). Pasteurization of liquid whole egg on its functional properties and exclusion of *Salmonella enteritidis* serovar Enteritidis. (In) Proceedings of 12<sup>th</sup> Annual Scientific sessions of World Poultry Science Association, Sri Lanka Branch 18<sup>th</sup> May, 20-24
16. Manchanayake, S.M.T.S., Fernando, P.S., Priyantha, M.A.R., DeAlwis, P.S., Liyanagunawardana, N., Perera, G.I.S. (2013). Isolation and characterization of toxigenic *Clostridium perfringens* from intestines and livers of broiler chicken. (In) Proceedings of 65<sup>th</sup> Annual scientific sessions of the Sri Lanka Veterinary Association 14<sup>th</sup> June, Vol 60, pp 13.
17. Priyantha, M.A.R., Fernando, P.S., Liyanagunawardana, N., Kumuduni, D.L.N., Puvandren, S., Vipulasiri, A.A., Abeyrathne, P.M.K.C.B., Thalagoda, S.A. (2013). Identification of latent carriers of Hemorrhagic septicemia from slaughtered cattle, Sri Lanka. (In) Proceedings of *The Young Scientists Forum Symposium of the National Science and Technology Commission, Young Scientists Forum 18<sup>th</sup> January, pp 37*.
18. Priyantha, M.A.R., Fernando, P.S., Liyanagunawardana, N., Epakanda, L., Karunaratne, C., Kumuduni, D.L.N., Abeyrathne, K., DeAlwis, P.S., Thalagoda, S.A., Wijewardana, G., Dilrukshi, G.B.K. (2013). Comparison of Gamma Interferon and Comparative PPD Tests for detection of *Mycobacterium bovis* infection in cattle. (In) Proceedings 65<sup>th</sup> Annual scientific sessions of the Sri Lanka Veterinary Association 14 June, Vol 60 , pp 16.
19. Perera, K.U.E., Ubeyratne, J.K.H., Jayaweera, M.D.N., Karunaratne, K.G.R.N. and Karunaratne, N.D. (2013). Surveillance for *Aeromonas* spp. in Healthy Goldfish in a Fish Breeding Centre at Rambodagalla in Sri Lanka. 64<sup>th</sup> Annual Convention of the Sri Lanka Veterinary Association.

*Annex IV - cont.*

- 20 Perera G.I.S, Manchanayake S.M.T.S, Kothalawala.H, Weerakoon.H and Wasantha Kumara N.A.Y (2013). Gross and histopathological findings in cattle and goats slaughtered at Kandy municipal council abattoir: A preliminary survey. 65<sup>th</sup> Annual Convention of the Sri Lanka Veterinary Association, 14<sup>th</sup> June, Plant Genetic Resource Centre and Institute of Continuing Education, Department of Animal Production and Health, Gannoruwa, Sri Lanka.
- 21 Premalal, G.G.C. Department of Animal Production and Health (2013) Intensive Propagation of Rooted Slips of CO3 Fodder Grass; Sinhala and Tamil Medium, A leaflet for National Fodder Development Day, 30 Oct. 2013
22. Premalal, G.G.C. and Perera, G.A.D. (2013) Soil biodiversity of natural grasslands in Sri Lanka; a general review. Proceedings of National Symposium on Biodiversity- 2013. pp. 90-95
23. Pathmasiri, P.G.R.P., Premalal, G.G.C. and Nayanangalie, W.A.D. (2013) Oxalate and nitrate accumulation in hybrid Napier var. CO3 (*Pennisetum americanum* x *P. purpureum*) and wild Guinea grass (*Panicum maximum*) grown in mid country of Sri Lanka. Proceedings. Undergraduate Research Symposium. 31<sup>st</sup> July 2013
24. Rajapaksha, D.I.G., Thilakarathne, D.S., Abeynayake, P., Fernando, P.S., Kalupahana, R. S. (2013). Prevalence of Salmonella in retail raw table eggs in Kandy municipal area. (In) Proceedings of 65<sup>th</sup> Annual scientific sessions of the Sri Lanka Veterinary Association 14<sup>th</sup> June, Vol 60, pp 17.
25. Sivaranjanie, R., Mangalika, U.L.P., Adikari, A.M.J.B. (2013). Effect of adulteration, keeping quality and sample preservation on freezing point depression of milk. In proceedings of undergraduate research symposium of Faculty of Agriculture, Rajarata University, Sri Lanka. P19
26. Sivakumar T, Okubo K, Igarashi I, Silva W.K.de , Kothalawala H , Silva S.S.P., Vimalakumar S.V. , Meewewa A.S, and Yokoyama N. (2013). Genetic diversity of merozoite surface antigens in Babesiabovis detected from Sri Lankan cattle. *Infection, Genetics and Evolution* 19, 134-140
27. Sivakumar.T, Tattiyapong M, Fukushia S, Hayashida K, Kothalawala. H, Silva .S. S.P, Vimalakumar ,S. V. , Kanagaratnam R, Meewewa A.S , Suthaharan K. , Puvirajan T, Silva W.K de, Igarashi .I, and Yokoyama . N (2013). Genetic characterization of Babesia and Theileriaparasites in water buffaloes in Sri Lanka. *Veterinary Parasitology*. In print.
28. Talamitiyagodage, M.G., Somaratne, P., Perera, K.C.R., Priyantha, M.A.R. (2013). A Preliminary study of the seroprevalence of Leptospirosis in domestic dogs in Suburbs of Colombo, Sri Lanka. (In) Proceedings of 65<sup>th</sup> Annual scientific sessions of the Sri Lanka Veterinary Association 14 June, Vol 60, pp 19.
29. Ubeyratne, J.K.H and Jayaweera, M.D.N (2013). An Outbreak of Peracute Enterotoxaemia in a Goat Herd of Saanen in Sri Lanka. *Journal of Commonwealth Veterinary Association*. July 2013. 29 (2). pp 10-12

*Annex IV – cont.*

30. Ubeyratne, J.K.H, Jayaweera, M.D.N, Somaratne, M. Kasagala, K.H.D.T. and Edirisinghe, E.A.S. (2013). Aquatic Ecosystem Diversity of Shrimp Larvae Rearing Water with Emphasis on Aquaculture Practices. Journal of Commonwealth Veterinary Association. July 2013. 29 (2). pp 18-
31. Ubeyratne, J.K.H and Jayaweera, M.D.N (2013). Surveillance Study on Highly Pathogenic Fish Rhabdovirus, the Spring Viraemia of Carp Virus in Goldfish (*Carassius auratus*) Breeder Farm in Sri Lanka. Journal of Commonwealth Veterinary Association. January 2013. 29 (1). pp 21-24
32. Weerasooriya, W.A.S.D., Priyankarage, N., Gunarathne, S.P., Silva, S.S.P., Atapattu, H., Chandima, R.A.T., (2013) Evaluation of Nutritional and Grading quality of locally produced maize. In: *Proceedings of the 65<sup>th</sup> Annual Convention and Scientific Sessions of the Sri Lanka Veterinary Association, Peradeniya, June 2013*. The Paper awarded as a best presentation in Animal production session
33. Weththasinghe, P., Jayawardana, B.C., Liyanage, R., Fernando, P.S., Vidanarachchi, J.K. (2013). Hypocholesterolaemic effect of Cowpea (*Vigna unguiculata* L. Walp) incorporated experimental diets in Wistar rats. (In) *Proceedings of 23rd Annual Student Research Session, Department of Animal Science, University of Peradeniya, Dec 21<sup>st</sup>, pp 1*
34. Wickramasinghe, H.K.J.P., Vidanarachchi, J.K., Himali, S.M.C., Fernando, P.S. (2013). Effect of different packaging materials on quality characteristics of chicken eggs during storage at room temperature in Sri Lanka. *13<sup>th</sup> ASEAN Food Conference*, 9-11<sup>th</sup> Sept, Singapore.
35. Weerasooriya, K.M.S.G., Gunawardana, G.A., Jayaweera, M.D.N., Weerasinghe, W.M.S.P., Malkanthi, R.M.S. (2013). Identification of meat samples of mouse deer (*Moschiola meminna*) by Polymerase Chain Reaction technique. The proceedings of 65<sup>th</sup> Annual scientific sessions of the Sri Lanka Veterinary Association 14 June, Vol 60, pp 5.

**Name of officers Attend Overseas Training / Meeting /Workshopes /Visit -2013**

*Annex V*

<b>Name of the Officer</b>	<b>Course/Programme</b>	<b>Country</b>
Dr. Fazi, M.A.M	I.A.E.A. Project- supporting early warning ,response and control of transboundary Animal diseases	China
Dr. Silva, S.S.P.	2nd South Asia FMD Regional Roadmap meeting	India
Dr. Pathirana, A.P.D.G.	Mycotoxin Inspection for food safety	Japan
Dr. De Silva, W.K.	Third Multi-Stakeholder Platform meeting	Kenya
Dr. Priyantha, M.A.R.	Food Testing Training Programme Microbiology	Italy
Dr. Wijethilake, T.P.	Secound International one health congrss -A world united againts infectious diseases:cross sectoral solutions	Thailand
Dr.Sivasothy, A.	CVA Asian Regional meeting and Rabies	India
Dr. Kithsiri, L.D.	Regional training workshop for "Training of Trainers" on Disease risk analysis	Nepal
Dr. Hettiarachchi, R.	Regional training workshop for "Training of Trainers" on Disease risk analysis	Nepal
Dr. Weeresooriya, K.M.S.G.	Training course on Gene Based Techniques for Biotechnology	India
Dr. Fernando, P.N.C.	Traning programme on cross border infection Prevention	Thailand
Dr. De Silva, W.K.	81st General session of the world Assembly of Delegates of the OIE	France
Dr. Adikarinayake, A.M.U.W.	Regional seminar for OIE national focal point on communication	China
Dr. Sivasothy, A.	OIE Global Conference on the Responsible and Prudent use of Antimicrobial Agents for Animals International solidarity to fight againts Antimicrobial Resistance	France
Dr. Abayawansa,W.D.	AFACI Project Planning meeting on AnGR	Mongolia
Dr. De Silva, WK	Advance Information on the 7th Regional GF-TADs and 4th HPED Meeting in Tokyo, Japan	Japan
Dr. Bandara, S.W.R.A.S.A.	Technical Training on Risk Analysis for SAARC countries	India
Dr. Rathnayake, D.R.T.G.	Inspection of importation of Dairy Animals	Australia
Dr. De Silva, W.K.	The 74th Executive Committee meeting the 74th APHCA Session and the regional workshoptm'Zoonoses and food -borne diseases in Asia- Pasific	Bhutan
Dr. Kodituwakku, M.	Regional Training Proramme	Nepal
Dr. Kumarawadu, P.L .	Regional Training Proramme Data management Workshop	Nepal
Dr. De Silva, W.K.	Globe conference on veterinary Education & the Role of the veterinary statutory body, Ensuring excellence and ethics of the veterinary profession Foz do Iguaza	Brazil
Mr.Pemalal,G.G.C.	FAO- APHCA Regional workshop on Animal Feed resources and their management in the Asia Pacific region	Thailand
Dr.Sarath, K. K	GTCi Poultry production , management and Disease prevention Technology	Japan
Dr. Abeyratne, S.A.E.	IAEA Regional training course on the Rapid and confirmatory Diognosis of Avian Influenza H7N9	Austria
Dr. Samaranayake, L.W.N.	Selection of five friesland bulls in Asutralia	Australia
Dr. Abeygunawardana, W.W.	Selection of five friesland bulls in Asutralia	Australia
Dr.Aboobucker, M.A.M.Z.	Globe programme of capacity building of OIE focal points	Korea
Dr.Aboobucker, M.A.M.Z.	Regional meeting on Zoonotic Diseases	Thailand
Dr. Hettigamage, G.U.	2013 International seminar on Livestock Products safety for Asian countries	Korea

**Name of officers Attend Overseas Training / Meeting /Workshopes /Visit -2014**



## Annex V cont.

Name of the Officer	Course/Programme	Country
Dr. Wickramasooriya, B.C.	2013 International seminar on Livestock Products safety for Asian countries	Korea
Dr. Perera, P.I.P.	Study tour on Ornamental Fish Industry	Singapore
Dr. Wasanthi, K.H.S.	Study tour on Ornamental Fish Industry	Singapore
Dr. Subasinghe, W.A.J.	Advocary meeting for Elimination of Human Rabies from SAARC countries	Bangladesh
Dr. Maharaarambe, D.S.	Mappin & Spatial Data Analysis	Nepal
Dr. Kumarasingha, G.D.N.	Training Workshop on TAD info and GIS/Spatial epidemiology for SAARC countries	Thailand
Dr. Fernando, P.V.A.A.	Field Epidemiology Training for veterinarians	Nepal
Dr. Jayasinghe, K.P.	Field Epidemiology Training for veterinarians	Nepal
Dr. Meewewa	Field Epidemiology Training for veterinarians	Nepal
Dr. Hettiarachchi, R.	OIE workshop on Disease Notification	Thailand
Dr. Wickramasinghe, C.P.	Emergency Assistsnce for sureivallance of Influenza A(H7N9)virus in poultry &	Thailand
Dr. Hettiarachchi, R.	Technical and policy Discussion on the prevention and control of Avian influenza	Thailand
Dr. Ubeyrathna, K.	Emergency Assistsnce for sureivallance of Influenza A(H7N9)virus in poultry &	Thailand
Dr. Ariyapala, K.D.	Seminar cum study visit programme on Accounting and Budgeting systems for Agricultural Sector	Thailand
Dr. Galahitiyawa, W.	Seminar cum study visit programme on Accounting and Budgeting systems for Agricultural Sector	Thailand
Dr. Sathyalingam, G.	Human Resource Development Professionals	India
Dr. Hafeel, A. H. M	Human Resource Development Professionals	India
Dr. Rathnayake, D.R.T.G.	High Yieling Dairy buffalo Breed Development in SAARC Countries	Bangladesh
Dr. Sivasothy, A.	South Asia Regional One Health Symposium	Bhutan
Dr. Kodituwakku, M.	South Asia Regional One Health Symposium	Bhutan
Dr. Perera, G. I. S.	South Asia Regional One Health Symposium	Bhutan
Dr. Kumarawadu, P.L .	South Asia Regional One Health Symposium	Bhutan
Dr. Rathnayake, D.R.T.G.	South Asia Regional One Health Symposium	Bhutan
Dr. Kothalawala, H.	Regional workshop on risk assessment and Reional poultry supply chain in SAARC countries	Nepal
Dr. Ariyapala, K.D.	28th Conference of the OIE Regional Commission for Asia, the Far ast and Oceania	Cebu, Philippiess
Dr. Gamage, S. M.	Asia Pascific wokshop on Multi-Sectoral collaboration for Prevention and control of Zoonoses	Thailand
Dr. Puvanendiran, S.	Second Regional workshop on progressive control of peste des petits Ruminants(PPR) for South Asia	Nepal
Dr. Karunarathna, T.M.W	Second Regional workshop on progressive control of peste des petits Ruminants(PPR) for South Asia	Nepal
Dr. Dissanayake, D.M.B.M.	Refresher Course 2013 Entrepreneurship and gender in the dairy value	Vietnam

**Support for Local Post Graduate studies**

	<b>Name of the officer</b>	<b>Course/ Programme</b>
01	Dr. B.S.S.Perera	Organizational Management (MSc)
02	Dr. S.A.E. Aberathna	Experimental Biology (MSc)
03	Dr. K.M.G.Werasooriya	Applied Statistics (MSc)
04	Mr. R.C.J.W. Rajasinghe	Computer Science (MSc)
05	Dr T.W.H.C Perera	Agriculture Economics & Resource Management (MSc)
06	Mrs .J.Karunarathna	Public Administration (PG diploma)

**Details of Examinations Conducted in 2013**

<b>No</b>	<b>Name of the Examination</b>	<b>Number of Applicants</b>
01	LDI - Promotion Examination ( Sabaragamuwa Province )	17
02	RA Recruitment Examination	15
03	SLSAH 1 <sup>st</sup> Bach Examination	88
04	LDI - Recruitment Examination (Prepared & evaluation- UVA )	15
05	RA- EB Examination	08
06	LDI -EB Examination	05
07	SLSAH -1 <sup>st</sup> Year Repeat Examination	04
08	SLSAH - Entrance Examination	225
09	Promotion Examination ( All Provinces) LDI	116
10	AP&H service EB-1	22
11	AP&H service EB-2	18

**Provincial Activities**  
**Progress of Services/ Activities of Provincial DAPH - 2013**

Dispensary Cases	WP	CP	SP	NP	EP	NWP	NCP	UP	SabP	Total
Cattle /Buffalo	12,223	4,651	10,827	15,671	9,179	17,324	6,191	4,276	3,898	<b>84,240</b>
Goat/Sheep	2,570	1,834	1,883	12,189	4,685	4,231	1,614	502	1,656	<b>31,164</b>
Pigs	1,372	280	415	170	89	1,891	587	46	381	<b>5,231</b>
Poultry	161,727	71,242	108,535	358,657	120,944	1,555,569	75,778	22,923	44,179	<b>2,519,554</b>
Pet Animals	10,615	5,406	3,592	14,742	795	4,525	2,267	1,540	3,081	<b>46,563</b>
Others	148	218	289	470	803	945	526	28	261	<b>3,688</b>
<b>Sub Total</b>	<b>188,655</b>	<b>83,631</b>	<b>125,541</b>	<b>401,899</b>	<b>136,495</b>	<b>1,584,485</b>	<b>86,963</b>	<b>29,315</b>	<b>53,456</b>	<b>2,690,440</b>

Field Cases	WP	CP	SP	NP	EP	NWP	NCP	UP	SabP	Total
Cattle /Buffalo	8,641	8,832	8,221	6,442	12,876	17,059	6,453	6,235	4,824	<b>79,583</b>
Goat/Sheep	2,479	1,331	1,174	3,451	6,483	2,646	1,507	509	1,514	<b>21,094</b>
Pigs	2,111	122	409	235	58	1,305	1,535	38	837	<b>6,650</b>
Poultry	37,079	1,799	27,763	37,346	92,001	61,279	37,839	34,510	7,092	<b>336,708</b>
Pet Animals	2	163	164	37	940	20	16	1,035	780	<b>3,157</b>
Others	9	55	48	12	52	557	27	1	15	<b>776</b>
<b>Sub Total</b>	<b>50,321</b>	<b>12,302</b>	<b>37,779</b>	<b>47,523</b>	<b>112,410</b>	<b>82,866</b>	<b>47,377</b>	<b>42,328</b>	<b>15,062</b>	<b>447,968</b>

Issue of Health Certificates	WP	CP	SP	NP	EP	NWP	NCP	UP	SabP	Total
Cattle	636	1,549	358	1,058	3,072	1,434	1,076	2,311	313	<b>11,807</b>
Buffalo	178	25	288	28	451	86	170	924	156	<b>2,306</b>
Goats	114	426	86	502	430	130	122	40	63	<b>1,913</b>
Pigs	287	230	49	50	30	143	141	26	54	<b>1,010</b>
Others	1	-	9	2	1	125	3	1	-	<b>142</b>
<b>Sub Total</b>	<b>1,216</b>	<b>2,230</b>	<b>790</b>	<b>1,640</b>	<b>3,984</b>	<b>1,918</b>	<b>1,512</b>	<b>3,302</b>	<b>586</b>	<b>17,178</b>

## Milk Collection by Main Milk Collecting Organizations - 2012 - 2013

Province	District	Milk Collection Litres	
		2012	2013
Western	Colombo	1,996,318	3,580,407
	Gampaha	7,594,292	8,590,614
	Kalutara	1,840,419	1,866,820
	<b>Total</b>	<b>11,431,029</b>	<b>14,037,841</b>
Central	Kandy	17,484,520	18,028,799
	Matale	7,702,444	9,120,599
	Nuwara-Eliya	31,165,131	34,712,106
	<b>Total</b>	<b>56,352,095</b>	<b>61,861,504</b>
Southern	Galle	953,573	992,232
	Hambantota	875,786	942,072
	Matara	775,533	930,766
	<b>Total</b>	<b>2,604,892</b>	<b>2,865,070</b>
North Central	Anuradhapura	14,762,698	16,971,803
	Polpnnaruwa	7,339,512	8,513,298
	<b>Total</b>	<b>22,102,210</b>	<b>25,485,101</b>
North Western	Kurunegala	29,100,044	30,494,879
	Puttlam	8,534,090	11,004,784
	<b>Total</b>	<b>37,634,134</b>	<b>41,499,663</b>
Northern	Jaffna	1,724,801	2,122,393
	Kilinochchi	785,198	906,892
	Mannar	966,394	1,095,174
	Mullativu	839,913	1,250,378
	Vauniya	1,151,829	1,927,614
	<b>Total</b>	<b>5,468,135</b>	<b>7,302,451</b>
Eastern	Ampara	7,496,953	7,882,969
	Batticaloa	8,216,053	7,696,391
	Trincomalee	2,282,278	2,630,296
	<b>Total</b>	<b>17,995,284</b>	<b>18,209,656</b>
Uva	Badulla	11,993,624	11,976,884
	Moneragala	13,947,764	14,726,111
	<b>Total</b>	<b>25,941,388</b>	<b>26,702,995</b>
Sabaragamuwa	Kegalle	992,276	1,015,999
	Rathnapura	1,396,655	1,631,710
	<b>Total</b>	<b>2,388,931</b>	<b>2,647,709</b>
Other **		1,683,079	1,500,000
<b>Island Total</b>		<b>183,601,176</b>	<b>202,111,990</b>

\*Collection details received from ;

\* Ambewela Livestock Co.Ltd  
 \* Cargills Quality Dairies  
 \* Fontera Brands Lanka Pvt. Ltd  
 \* Lanka Dairies (Pvt) Ltd  
 \* Milco (Pvt)LTD  
 \* Pattipola Livestock  
 \* Polonnaruwa Co-op  
 \* Swiss Cheese Company

\* Ambewela Products  
 \* CIC Dairies (PVT) Ltd.  
 \* Kotmale Dairy Product (Pvt) Ltd.  
 \* Lucky Dairys  
 \* Nestle Lanka Ltd.  
 \* Pelwatte Dairies Ltd  
 \* Richlife Dairies Ltd.  
 \*\* Other- area is not clearly mentioned

### Quarantine Holdings and the Period of Quarantine 2013

Station	Type of animals	Strain/ breed	No. of animals	Country of origin	Period of Quarantine
On farm quarantine- NLDB-Bopaththalawa, Menikpalama, Dayagama farms	Pregnant heifers	Jersey/ Friesian/ Jersey x Friesian	1502(Jersey- 310/ Friesian-05/ Jersey x Friesian-1187)	Australia	30 days
AQO Katunayake	Bull calves	Jersey	04	Australia	30 days
AQO Katunayake	Horse	Arabian	01	Baharain	29 days
AQSColombo	Horse	Thoroughbred	06	India	30 days
On farm quarantine	Horse	Thoroughbred	06	Pakistan	30 days
AQO Katunayake	Dog	Cross	01	Dubai	-
AQS Katunayake	Cat	Cross	01	Cyprus	-
AQOKatunayake	Dog	Cross	04	Thailand	-
AQOKatunayake	Dog	Great dane	01	India	-
AQOKatunayake	Dog	Pekingese	01	Cyprus	-
AQOKatunayake	Dog	Cross	01	USA	-
AQOKatunayake	Cat	Cross	01	USA	-
AQOKatunayake	Dog	Labrador	01	Kuwait	-
AQOKatunayake	Cat	Persian	01	Doha	-
AQOKatunayake	Dog	Labrador cross	01	Phillipines	-

## Quarantine Holdings and the Period of Quarantine 2013

Station	Type of animals	Strain/ breed	No of animals	Country of origin	Period of Quarantine
AQOKatunayake	Rabbit	Polish mini	01	Thailand	30 days
AQO Katunayake	Cat	Persian	02	Maldives	-
AQO Katunayake	Live fish	Arawana	05	Singapore	-
AQO Katunayake	Cat	Cross	01	Italy	-
AQO Katunayake	Dog	Spitz cross	01	Kuwait	-
AQO Katunayake	Dog/Cat	Husky/Persian	01/01	Jordan	-
AQO Katunayake	Dog	German shephard	01	Italy	-
AQO Katunayake	Dog	Cross	01	Thailand	-
AQO Katunayake	Pigeon	Cross	16	Kuwait	-

### Details of Consignments subjected to Quarantine Surveillance in 2013

Type of Animal/Animal-product/Animal By-product		No. of consignments arrived		Quantity arrived (No./MT)		No. of consignments inspected	
		2012	2013	2012	2013	2012	2013
1.	DOC - Grand Parents	06	09	33,377	44946	06	09
	- Layer Parents	16	22	151,573	103494	16	22
	- Broiler parents	51	41	472,378	389770	51	41
	- Commercial layer	-	-	-	-	-	-
2.	Meat - Poultry	33	20	850.718	329.180	33	20
	- Beef	36	27	72.300	75.250	36	27
	- Mutton	22	23	218.250	248.560	22	23
	- Lamb	27	21	100.976	92.640	27	21
	- Pork	01	04	0.250	25.840	01	04
	- Venison	01	-	0.040	-	01	-
	- Duck	03	08	19.910	28.300	03	08
	- Turkey	02	04	20.170	31.700	02	04
	- Casings	10	09	6.800	6.810	10	09
3.	Table eggs	-	-	-	-	-	-
4.	Hatching eggs	-	-	-	-	-	-
5.	Meat and Bone Meal	145	130	27,584.390	14663.960	145	130
6.	Ornamental fish	253(Marine-227 Fresh water-26)	280(Marine-247, Fresh water-33)	2,462,577	9210175	253(Marine-227 Fresh water-26)	280(Marine-247, Fresh water-33)



### Details of Consignments subjected to Quarantine Surveillance in 2013

Type of Animal/Animal- product/Animal By-product		No. of consignments arrived		Quantity arrived (No./MT)		No. of consignments inspected	
		2012	2013	2012	2013	2012	2013
7.	Cattle	03 (Pregnant heifers-01, Stud bull calves-02)	02 (Pregnant heifers-01, Stud bull calves-01)	508 (Pregnant heifers-498, Stud bull calves-10)	1506 (Pregnant heifers-1502, Stud bull calves-04)	03 (Pregnant heifers- 01,Stud bull calves-02)	02 (Pregnant heifers-01, Stud bull calves-01)
	Goats	-	-	-	-	-	-
	Zoo animals	02	03	09	05	02	03
	Horses	04	03	37	17	04	03
	Pet birds	21	05	554	105	21	05
8.	Dogs/Cats	252	244	341	321	252	244
9.	Fish meal	224	218	19,438.385	11329.740	224	218
10.	Prawn feed	220	247	5,302.538	8115.750	220	247
11.	Tallow	18	16	1,065.996	983.810	18	16
12.	Gelatine	26	33	293.210	333.900	26	33
13.	Egg powder	06	08	6.020	6.200	06	08
14.	Egg Albumin	04	06	4700	5.500	04	06
	Whole liquid egg	04	06	74.780	110.300	04	06
15.	Feather /Skins/Bristles - Other Products	81	91	62.236	18.860	81	91

### Details of Consignments subjected to Quarantine Surveillance in 2013

Type of Animal/Animal- product/Animal By-product		No. of consignments arrived		Quantity arrived (No. / MT)		No. of consignments inspected	
		2012	2013	2012	2013	2012	2013
16.	Frozen fish	308	475	9,717.947	13531.290	308	475
17.	Fish Food	29	52	358.825	707.400	29	52
18.	Leather	141	163	343.139	649.200	141	163
19.	Feed Ingredients (Soya bean meal, Corn meal, Wheat ,Maize, Rape seed ,Guar meal, palmkernel ,cotton seed meal)	614	661	171,724.395	167195.300	-	-
20.	Chicken products(Chicken powder, Chicken essence, Chicken extract, Chicken soup)	44	22	68.000	104.16	44	22
21.	Pet food	34	40	806.735	765.140	34	40
23	Vaccines	-	02	-	40000	-	02
24	Veterinary drugs	02	-	1.76	-	02	-
25	Semen	10	10	24,631	20362	06	10

**Note:**

**BSE clearance:** Screened the applications and released 1168 consignments under BSE Clearance in year 2012.

1135consignments released in year 2013.

**Animal Feed Ingredients of Agricultural Origin:** forHPAI Clearance 614nos in year 2012

-661no s in year 2013

**Fumigation:** No. of by- products and feed ingredients fumigated before release in 2012- 43

2013-33

*Annex XII*

**Details of Consignments Detained / Destroyed in 2013**

No	Type of Consignment	Country of origin	Reason for destruction/ detention	Quantity Kg/ No.	Action taken
1	Live fish-Cat fish	Israel	Dead fish at the arrival	-	Destroyed
2	Pet bird	Bangkok	No import permit and IVHC	Pigeon-04, Guinea pig-04, other-10	Re exported
3	Peacock feathers	India	No import permit and IVHC	15 no	Destroyed
5	Peacock feathers	Malaysia	No import permit and IVHC	103 no	Destroyed
6	Peacock feathers	India	No import permit and IVHC	01 bundle	Destroyed

\*IVHC - International Veterinary Health Certificate

## Export of Animals, Animal Products and Animal By-Products -2013

Category		Number/ Quantity(MT) In 2012	Number/ Quantity(MT)in 2013
	Item		
01	Ornamental fish	20,968,932	23,953,329
02	Dogs	136	103
03	Cats	73	72
04	Poultry	107,944	51,656
05	Pet birds	1,032	544
06	Zoo animals	01	12
07	Elephants	04	02
08	Rabbit/rat/hamster	Rabbits - 01 Guinea pigs - 20	-
09	Animal products-meat and meat products	1,771.33	1939.67
10	Table eggs	2,147,822	3,437,226
11	Hatching eggs	-	5,763,043
12	Fish and fish products	2.11	-
13	Animal by products- Artistic brushes/dog chews/elephant dung papers/hat/hat parts  Bone grits/cattle bone and crushed/dry crab shells	3,592,966 pieces  183.01	3,029,215 pieces  33.05
14	Prawns/crabs/lobster	1.85	-
15	Leather	31.12	27.2

**Raw Materials Usage for Compound Feed Production  
by Register Animal Feed Manufactures - 2013**

<b>Type of Raw Material</b>	<b>Raw Materials</b>	<b>Local MT</b>	<b>Imported MT</b>	<b>Total Usage MT</b>
Cereals	1.Maize	261,769.4	0	261,769.4
	2.wheat	219	14,341	14,560
	3.Others(Sorghum)	6,977	4,420	11,397
Cereal by Products	1.Rice Polish	21,883.6	0	21,883.6
	2.Rice Bran	24,501.9	0	24,501.9
	3.Wheat pollard	2,558	0	2,558
	4.Wheat Bran	25,742.2	219.4	25,961.6
	5.Wheat Flour	11	0	11
	6.Broken Rice	8,542	0	8,542
	8.Corn Gluten Meal	1,312	0	1,312
	9.Dhal Husk	2,202.9	0	2,202.9
	Oil Meals	1.Coconut Meal/Poonac	8,972	0
2.Soya Bean Meal		2,124.8	91,998.5	94,123.3
4.Other (hypro soya &fuul fat So)		339	5,178	5,517
Animal by products	1.Fish Meal	665.6	2,441.3	3,106.9
	2.Meat & Bone Meal	32.6	10,632	10,664.6
	3.Others	48.2	4253	4301.2

**Raw Materials Usage for Compound Feed Production  
by Register Animal Feed Manufactures - 2013**

<b>Type of Raw Material</b>	<b>Raw Materials</b>	<b>Local MT</b>	<b>Imported MT</b>	<b>Total Usage MT</b>
Mineral Supplement	1.Calcium Carbonate	4,690	120	4,810
	2.Salt	410	0	410
	1.Shell Grit /Lime Stone	2,566.3	0	2,566.3
	2.Di Calcium Phosphate	1,293.4	53,211	54,504.4
	3.Pre-Mixes	0.6	0	0.6
	4 Other ( Pam Oil Meal)	563.7	0	563.7
Additives	1.Vitamins	6.8	5,560.6	5,567.4
	2.Minerals & Trace Elements	51.8	48,579	48,630.8
	3.Bindors	13.2	152.5	165.7
	4.Growth promoters	3.8	108.8	112.6
	5.Anticoccidial agents	0.7	109	109.7
	6.Enzymes	49.4	3.6	53
	7.L-Lysine	7.6	1,182.9	1,190.5
	8.Dl-Methionine	21.2	986.6	1,007.8
	09.L-Thereonine	0	63	63
Fat	Oil	0	99.38	99.38
	Others	1,390	366.7	1,756.7
	Choline Chloride	12.15		12.15
	Vegetable Oil	862		862

## Present Cadre Positions of the Department and Staff Strength (2013.12.31)

S. No.	Designation	Approved Cadre	Current		
			Project I	Project II	Project III
1	Director General	1	1		
2	Additional Director General	2	1		
3	Director (AP&HS)	6		1	1
4	Director (Administration)	1	1		
5	Chief Accountant	1	1		
6	Chief Agriculture Economist	1			
7	Chief Epidemiologist	1			
8	Chief Scientist	6			
9	Chief Veterinary Investigation Specialist	1			
10	Chief Vaccinating Officer	1			
11	Livestock Extension Specialist	1			
12	Livestock Re productive specialist	1			
13	Animal Breeding Specialist	1			
14	Dairy Engineering Specialist	1			
15	Chief Agronomist	1			
16	Veterinary Public Health Specialist	1			
17	Deputy Directors	8	1	3	2
18	Vaccine Superintendent /AD Vaccine	1		1	
19	Registrar (Animal Feed)	1	1		
20	Registrar (Veterinary Drugs)	1			
21	Chief Animal Quarantine Officer	1	1		
22	Agriculture Economist	1	1		
23	Livestock Officer	16	2		9
24	Veterinary Surgeon	39	7	15	14
25	Veterinary Research Officer	24		22	
26	Animal Quarantine Officer	10	8		
27	Veterinary Investigating Officer	26		16	
28	Research Officer	5		3	

**Present Cadre Positions of the Department and Staff Strength (2013.12.31)**

*Cont.....*

S. No.	Designation	Approved Cadre	Current		
			Project I	Project II	Project III
29	Accountant	3	1		
30	Internal Auditor	1	1		
31	Civil Engineer	1	1		
32	Assistant Director (Administration)	2	1		
33	Administrative Officer	3	1	1	
34	Statistical Officer	1	1		
35	Translator	2	2		
36	Technical Officer	1	1		
37	Information Communication Officer	1			
38	Livestock Development Officer- Special	8	1	1	3
39	Livestock Development Officer-1.2.3	65	11	8	25
40	Librarian	3			1
41	Budget Assistant	2	1		
42	Development Officer	57	13	16	9
43	Development Assistant	32	16	4	10
44	Legal Assistant	2	2		
45	Program Assistant (Archives)	2	1	1	
46	Program Assistant (Public Relations)	2		1	1
47	Monitoring Assistant	6	2	1	2
48	Program Assistant	9	1	4	3
49	Program Assistant (Audio Visual)	2			2
50	Program Assistant (Communication)	2	1		1
51	Program Assistant (Media)	2		1	1
52	Management Assistant	72	41	14	10
52	Research Assistant (Special )	6	1	4	
54	Research Assistant	70	2	52	4
55	Draftman	1			



**Present Cadre Positions of the Department and Staff Strength (2013.12.31)***Cont.....*

S. No.	Designation	Approved Cadre	Current		
			Project I	Project II	Project III
56	Driver	76	15	29	17
57	Watcher	4			4
58	Laboratory Sub Assistant	38		7	
59	KKS	32	14	6	10
61	Livestock Assistant	20		3	14
62	Boiler man	1			
63	Carpenter	3	2		1
64	Electrician	1	1		
65	Tractor Operator	3			2
67	Bungalow Keeper	1			
68	Garden Labourer	1			
69	Sanitary Labourer	3		1	1
70	Field Assistant	159	13	57	75
<b>Total</b>		862	172	272	223

*Source: Administration Division*

## Financial Allocations and the Expenditure Summary - 2013

	Allocation (Rs. Mn.)	Expenditure (Rs. Mn.)	Balance at 31.12.2013 (Rs. Mn)	Expenditure as a % of Allocation
<b>Project 1</b>				
Capital Expenditure	60,400,000	46,648,618	13,751,382	77.23
Recurrent expenditure	319,856,000	319,446,383	409,617	99.87
Personal Emoluments	235,012,550	234,983,426	29,124	99.98
Other	84,843,450	84,462,957	380,493	99.55
<b>Total</b>	<b>380,256,000</b>	<b>366,095,001</b>	<b>15,738,425</b>	<b>96.27</b>
<b>Project 11</b>				
Capital Expenditure	109,500,000	84,387,379	25,112,621	77.06
<b>Total</b>	<b>109,500,000</b>	<b>84,387,379</b>	<b>25,112,621</b>	<b>77.06</b>
<b>Project 111</b>				
Capital Expenditure	313,000,000	189,090,379	123,909,621	60.41
<b>Total</b>	<b>313,000,000</b>	<b>189,090,379</b>	<b>123,909,621</b>	<b>60.41</b>
<b>Total Capital Expenditure</b>	<b>482,900,000</b>	<b>320,126,376</b>	<b>162,773,624</b>	<b>66.29</b>
<b>Total Recurrent expenditure</b>	<b>319,856,000</b>	<b>319,446,383</b>	<b>409,617</b>	<b>102.26</b>
<b>Total Capital &amp; Recurrent expenditure</b>	<b>802,856,000</b>	<b>639,572,759</b>	<b>163,183,241</b>	<b>79.66</b>

**Livestock Planning and Economics Division**  
**Department of Animal Production and Health**

**Peradeniya**

**Sri Lanka**

**Tel/Fax:+94-81-2388850**  
**Email: [daphlpe@sltnet.lk](mailto:daphlpe@sltnet.lk)**

**LPE/2014/03**