


Animal Feed Act No 15 of 1986

Why an Act ?

- ◆ To regulate, supervise and control the manufacture, sale and distribution of Animal Feed and to provide for matters connected there with or incidental there to...

TO WHOM

- ◆ Animal feed manufacturers
 - ◆ Animal Feed/Raw material Importers
 - ◆ Dealers AF & RM
 - ◆ Sellers
 - ◆ Exporters
- 
- A decorative graphic at the bottom of the slide consisting of a silhouette of a mountain range in various shades of teal, extending from the right side towards the center.

What they should know

Every person desirous of selling animal feed whether manufactured or imported should register their animal feeds by the Registrar of Animal Feeds.

WHAT IS THE OBJECTIVE

- Is to improve the quality of animal feed available for sale and thereby to protect farmers and genuine animal feed manufacturers / importers.

Responsibilities

- ◆ Minister of Livestock Development
- ◆ Implementing authority
 - Director General, Department of Animal Production & Health

Registrar/animal Feeds

Animal Feed Advisory Committee

Authorized Officers

Authorized analyst & Referee Analyst

Functions

Registrar/Animal Feeds -
(Appointed under section 2)

- ◆ Licensing authority for the purposes of the Act.

Animal Feed Advisory Committee(AFAC)

Appointed by the Minister under section 8 of the Act
Main Functions

- ◆ Advice Registrar
- ◆ Recommendations to Controller of Imports and Exports
- ◆ Proposals to the Minister in the interest of national economy.
- ◆ To furnish publications/study reports

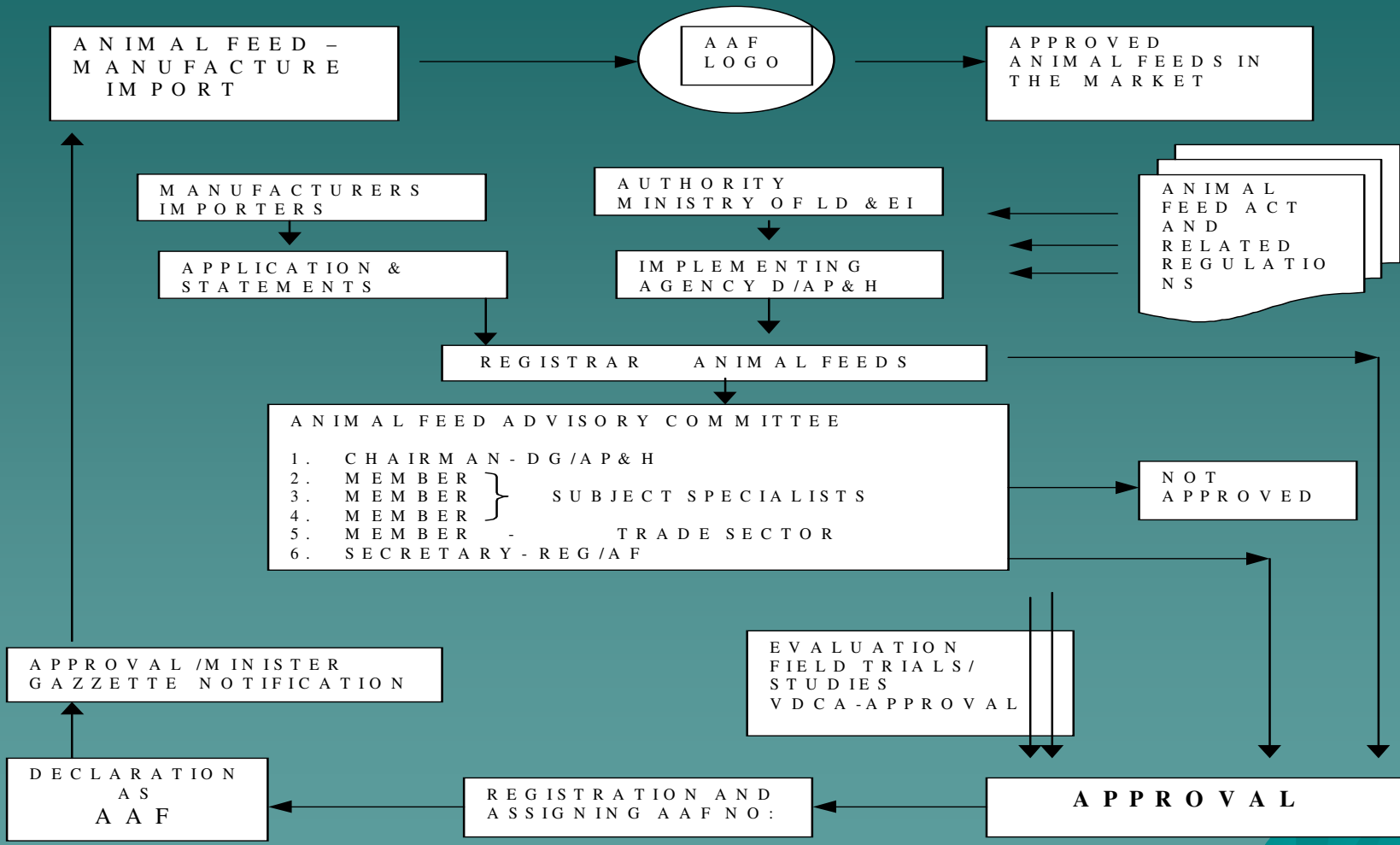
Authorized officers

- ◆ *Nominates by DG/AP&HA*
 - ◆ Attend to complaints
 - ◆ Contravention of the provisions
 - ◆ Procure samples for analysis when in doubt
 - ◆ Inspections of feed mills, importers, dealers- (authorized officers)
 - ◆ Assure the quality of feeds available for sale.
- Other related activities

Authorized Analyst & Referee Analyst

- ◆ “Authorized analyst” means the Government analyst, or Assistant Government Analysts and any other person authorized by the Minister by notification in the *Gazette* to act as such ;
- ◆ “referee analyst ” means an analyst nominated by the Registrar under subsection (2) of section 24.

ANIMAL FEED REGISTRATION - FLOW CHART



What is an approved Animal Feed

It should comprise of -

- ◆ warranty in respect of the composition, strength, quality and purity.
- ◆ the number assigned and the logo of AAF.
- ◆ a label according to the Act (03 languages).
 - * Name
 - * Composition
 - * Instructions for use
 - * Net weight
 - * Name and address of the manufacture/importer
 - * Trade name
 - * Formula (not mandatory)
 - * Date of manufacture/expiry

Your Role as a Veterinarian

IS **very important**

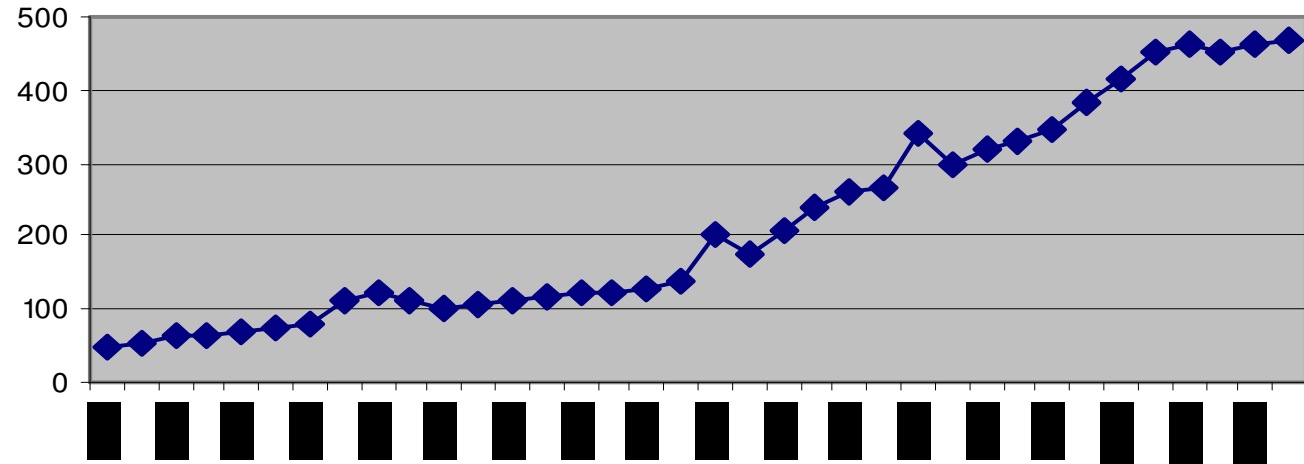
- ◆ Assist Implementation
- ◆ Vigilance over situations
- ◆ Create awareness among stake holders
- ◆ Protection of Farmers rights
- ◆ Technology development of feed milling.
- ◆ Encourage utilization of local feed ingredients.
- ◆ Encourage self mixing of Feed

Feed Industry



STATUS OF THE FEED INDUSTRY

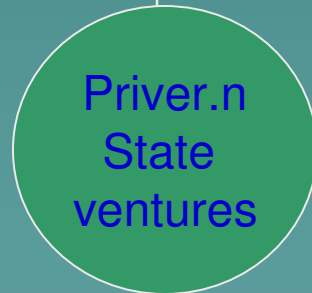
COMPOUND FEED PRODUCTION



1950-1970
 On set of com .pr.
 Oils & fat
 BCC
 Moosajees

State

Custom mix
 High demand
 Private-supplies
 High quality
 Sustained-local
 Imports-restricted



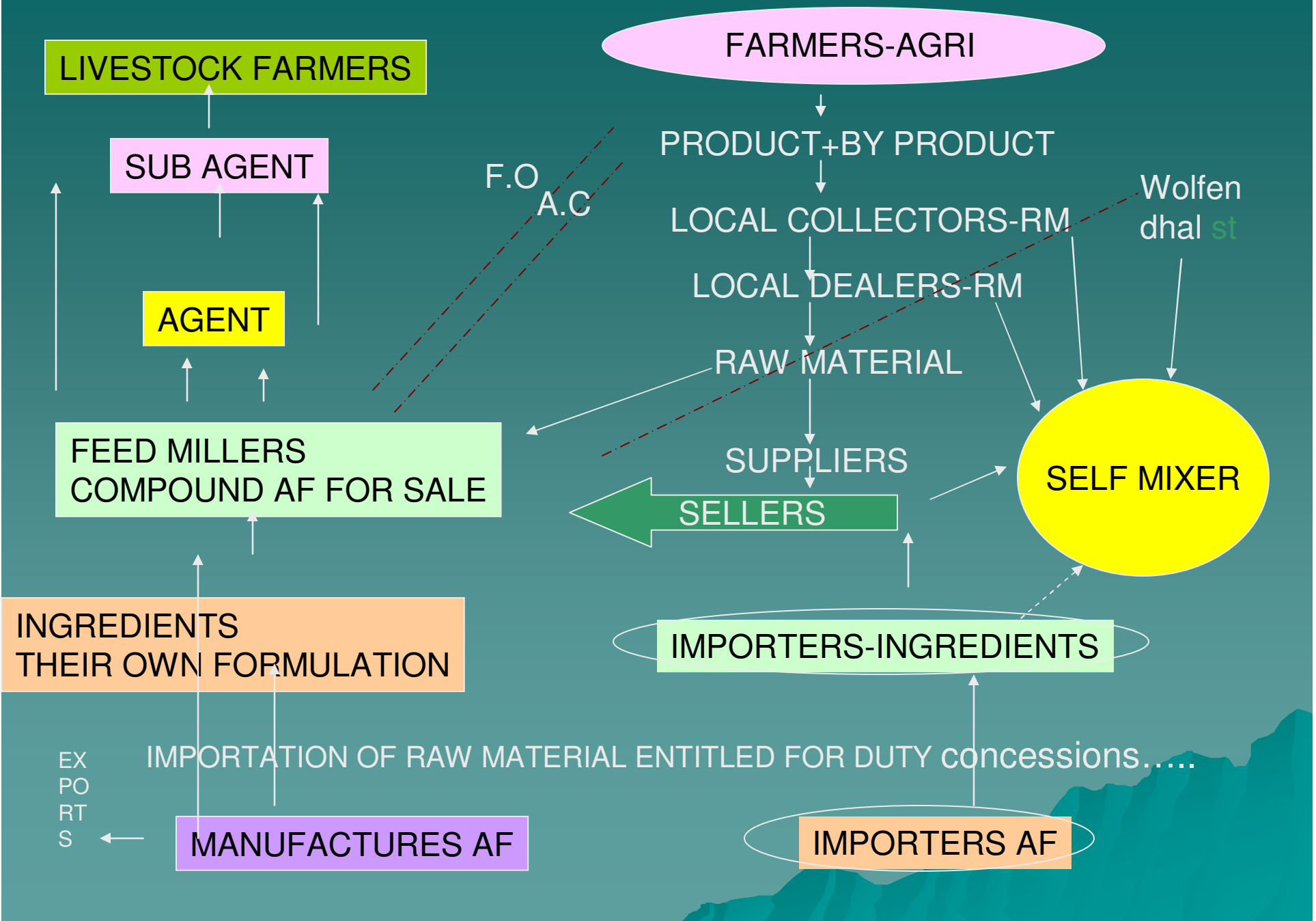
Self
 mixing

BOI

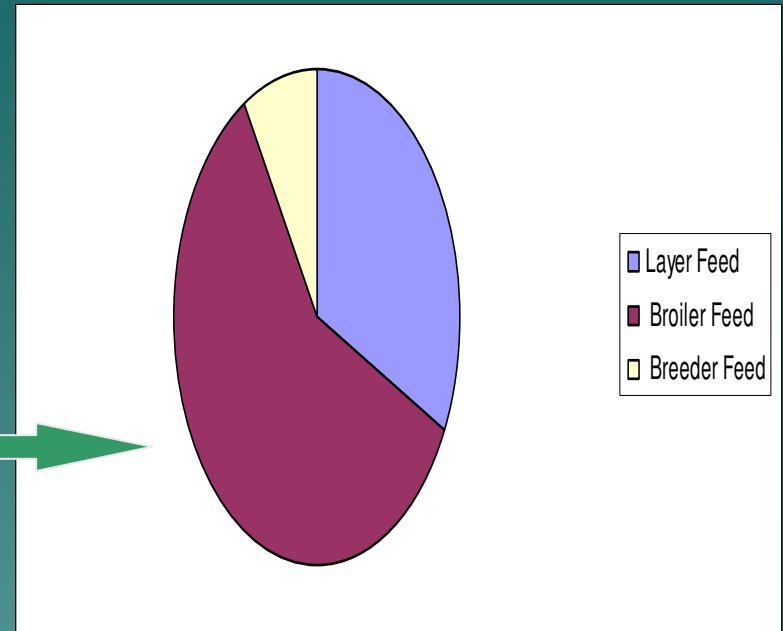
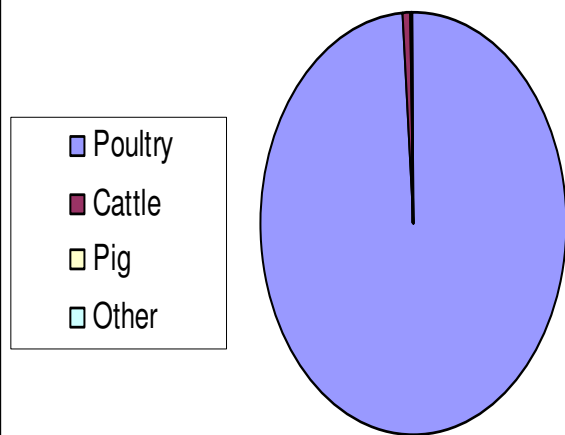
Private

Open economy
 Invitation to
 pvt.entrepreneurs
 State incentives
 Regulatory control
 Imports-increase

INDUSTRY AT PRESENT



Compound Feed Production-2006



FEED USAGE-2006

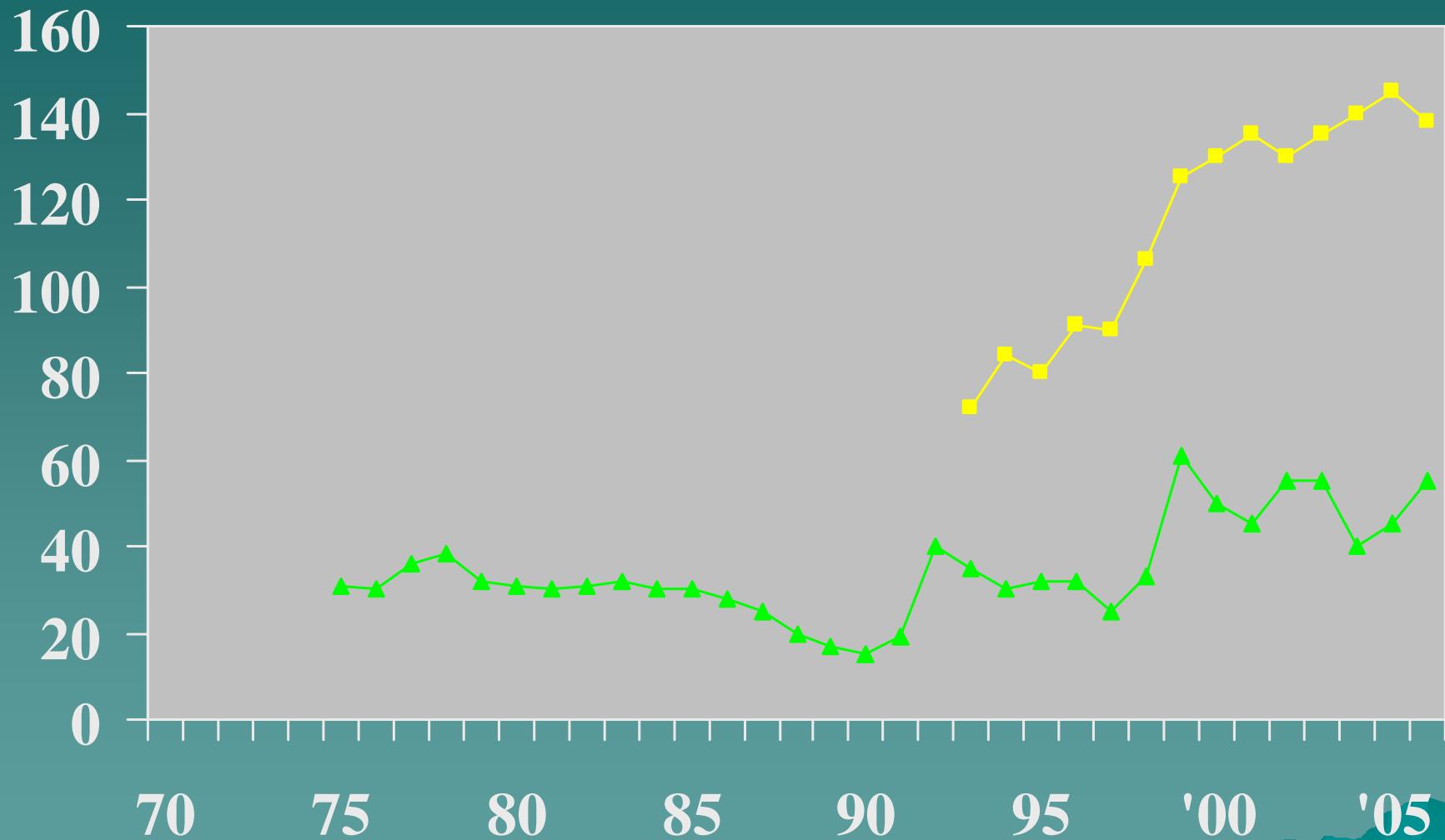
CLASS	MATERIAL	USAGE (MT)	MEAN PRICE (RS/KG)	IMPORTED FROM
<i>Cereals</i>	1. <i>Miaze</i>	128704	18	India
	2. <i>Wheat</i>	65744	18	India
<i>Cereal by products</i>	1. <i>Rice Polish</i>	39161.		*
	2. <i>Rice Bran</i>	327.57		*
	3. <i>Wheat pollard</i>	9837.8		
	4. <i>Wheat Bran</i>	16164.7		
	5. <i>Wheat Flour</i>	4944		
<i>Oil Meals</i>	1. <i>Cocanut Meal</i>	104	19	
	2. <i>Soya Bean Meal</i>	75479	283	India
	3. <i>Rape Seed Meal</i>	5113.	17	India
<i>Animal by Products</i>	1. <i>Fish Meal</i>	6186	611	Australia, Maldives, N Z, USA
	2. <i>Meat & Bone Meal</i>	8291.	405	Australia, N Z,,
	3. <i>Squid Liver Powder</i>	18.3	62	Skorea
<i>Mineral Supplements</i>	1. <i>Di-Calcium Phosphate</i>	2092	398	China, Japan
	2. <i>Sodium Bicarbonate</i>	278.5	225	China,
<i>Additives Vitamins</i>	1. <i>Vitamins</i>	193.025	250	France, Netherland, China, Germany,
<i>Amino Acids</i>	1. <i>L-Lysine</i>	358.85	175	Thailand, Vietnam
	2. <i>DI-Methionine</i>	129.2	265	Belgium
	3. <i>DI-Methionine Liquid</i>	360	160	Spain, Japan
<i>Antioxidants</i>	1. <i>Endox Dry</i>	0.775	165	Singapore
	2. <i>Santoquin Powder</i>	19.5	311	China
	3. <i>Santoquin Liquid</i>	0.82	370	USA
<i>Others</i>	1. <i>Bergafat</i>	462.5	56	Malaysia
	2. <i>BioFat</i>	407.6	46	Malaysia

Production, usage and demand

Maize:

- ◆ Large dependency on imports - Production not increased in proportion to requirement.
- ◆ Local Production remained static, around 30,000-50,000 mt, except last two Years.
- ◆ Import dependency is questionable
- ◆ Alternative energy source not available, hence continue to be the main energy source in feed.
- ◆ State intervention-release of state land. Attraction of private entrepreneurs and feed millers
- ◆ Farmer organizations- Yaya programs
- ◆ Improve post harvest technology
- ◆ At present -Forward contract scheme through central bank involvement- Addl 25000 acres

Maize



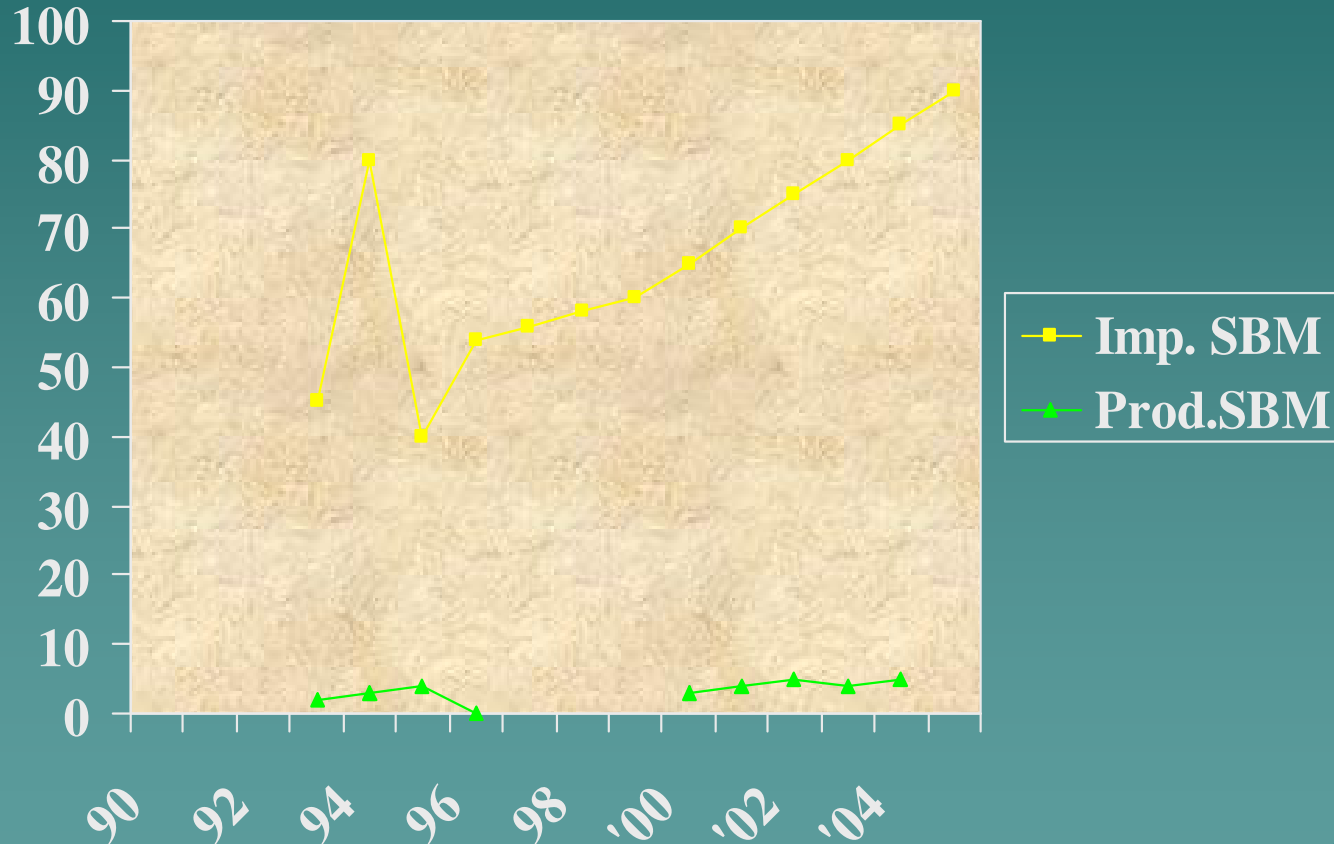
—■— Imp. Maize —▲— Loc. Maize

SOYABEAN MEAL

- ◆ Main protein supplement
- ◆ 100% imported as no processing facility available
- ◆ Local production use for human food

Import of Soybean meal

Imports :



Production, usage and demand of major raw materials...continue

- ◆ **Rice by-products :**
- ◆ **Broken rice:** Seasonal availability, quality and cost limits inclusion levels.
- ◆ **Rice bran/Polish:** Nutritional limit due to high fibre and low energy. Traditional milling contribute for high fibre. Less than 50% of the total production is used in compounded feed. Improve milling will help more usage. Large amount is used for direct feeding of cattle.

Conclusions

- ◆ Poultry feed will remain as the main business
- ◆ Imports of raw materials will increase
- ◆ Demand for maize will continue
- ◆ No possible alternative to maize
- ◆ Improving rice milling will help to use more rice by-products.
- ◆ Demand for soybean meal will increase. Production and establishment of processing will be useful.

Thank you

